



EUROPEAN SYTEMS LOCKS



VENECIA

Reference	Finishes	Funtion	Notes
Jl02035	PC + BN	Door Handle	To be install with mortise and key hole



ROMA

Reference	Finishes	Funtion	Notes
Jl02031	PC	Door Handle	To be install with mortise and key hole



BARI

Reference	Finishes	Funtion	Notes
Jl02034	SS	Door Handle	To be install with mortise and key hole



FLORENCIA

Reference	Finishes	Funtion	Notes
Jl02032	SS	Door Handle	To be install with mortise and key hole

DOOR HANDLES



ROSE

Reference	Finishes	Funtion	Notes
Jl02980	Zinc Alloy + Steel	Door Handle	To be install with mortise and key hole



SANTIAGO

Reference	Finishes	Funtion	Notes
Jl00656	Zinc Alloy + Steel	Door Handle	To be install with mortise and key hole



LUCHI

Reference	Finishes	Funtion	Notes
Jl03377	Zinc Alloy + Steel	Door Handle	To be install with mortise and key hole

DOOR HANDLES



LAIDA

Reference	Finishes	Funtion	Notes
Jl00803	SS	Door Handle	To be install with mortise and key hole
Jl02172	PC	Door Handle	To be install with mortise and key hole



TOLEDO

Reference	Finishes	Funtion	Notes
Jl02171	SS	Door Handle	To be install with mortise and key hole



NOVO

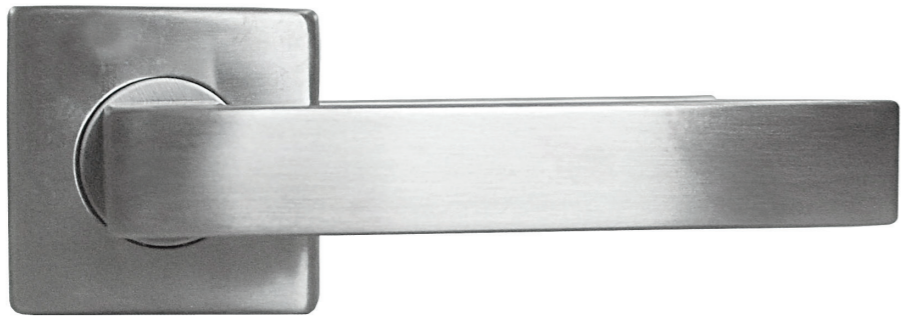
Reference	Finishes	Funtion	Notes
Jl03378	SS	Door Handle	To be install with mortise and key hole



Jl02979

Reference	Finishes	Funtion	Notes
Jl02979	SS	Door Handle	To be install with mortise and key hole

DOOR HANDLES



BERLIN

Reference	Finishes	Funtion	Notes
J100710	SS	Door Handle	To be install with mortise and key hole

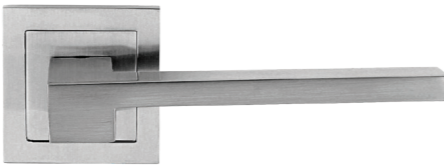
MILANO

Reference	Finishes	Funtion	Notes
J103361	Zinc Alloy + Steel	Door Handle	To be install with mortise and key hole



BELO

Reference	Finishes	Funtion	Notes
J103362	Zinc Alloy + Steel	Door Handle	To be install with mortise and key hole



DOOR HANDLES



ISRAEL

Reference	Finishes	Funtion	Notes
J103363	SS	Door Handle	To be install with mortise and key hole

BETEL

Reference	Finishes	Funtion	Notes
J103364	Zinc Alloy + Steel	Door Handle	To be install with mortise and key hole



ROSSI

Reference	Finishes	Funtion	Notes
J103365	Zinc Alloy + Steel	Door Handle	To be install with mortise and key hole



MRH-31

Reference	Finishes	Funtion	Notes
J102982	Zinc Alloy + Steel	Door Handle	To be install with mortise and key hole

DOOR HANDLES



SANTIAGO

Reference	Finishes	Funtion	Notes
J100656	SS	Door Handle	To be install with mortise and key hole

ELE

Reference	Finishes	Funtion	Notes
J100712	SS	Door Handle	To be install with mortise and key hole



DINTEL

Reference	Finishes	Funtion	Notes
J102986	SS	Door Handle	To be install with mortise and key hole

MARD-2

Reference	Finishes	Funtion	Notes
J102981	SS	Door Handle	To be install with mortise and key hole



DOOR HANDLES (with plate)



ACAB

Reference	Finishes	Funtion	Notes
J103366	SS	Plate with handle	To be install with mortise hole



JUDA

Reference	Finishes	Funtion	Notes
J103367	SS	Plate with handle	To be install with mortise hole



ISRAEL

Reference	Finishes	Funtion	Notes
J103363	SS	Plate with handle	To be install with mortise hole



RIBLA

Reference	Finishes	Funtion	Notes
J103368	SS	Plate with handle	To be install with mortise hole

DOOR HANDLES (with plate)



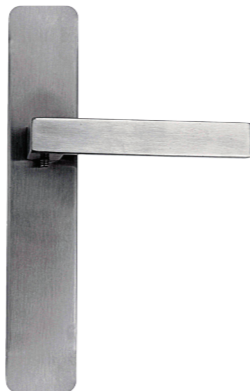
TOLEDO

Reference	Finishes	Funtion	Notes
J102171-Plate	SS	Plate with Handle	To be install with mortise hole



CORINTO

Reference	Finishes	Funtion	Notes
J103370	SS	Plate with Handle	To be install with mortise hole



ATENAS

Reference	Finishes	Funtion	Notes
J103371	SS	Plate with Handle	To be install with mortise hole

GALILEA

Reference	Finishes	Funtion	Notes
J103369	SS	Plate with Handle	To be install with mortise hole

DOOR HANDLES (with plate)



SINAI

Reference	Finishes	Funtion	Notes
J103372	SS	Plate with Handle	To be install with mortise hole



ANA

Reference	Finishes	Funtion	Notes
J103373	SS	Plate with Handle	To be install with mortise hole



TIGRIS

Reference	Finishes	Funtion	Notes
J103375	SS	Plate with Handle	To be install with mortise hole



HARAN

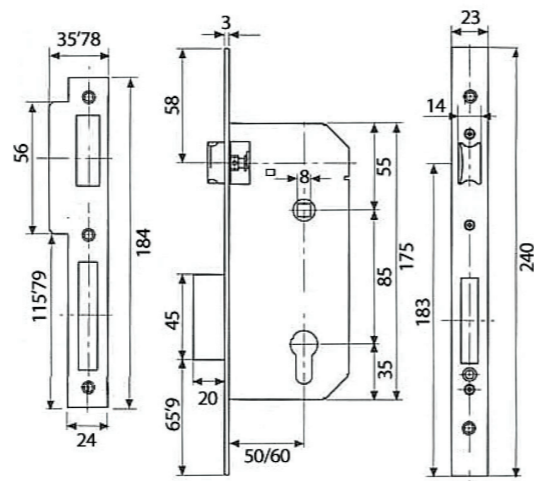
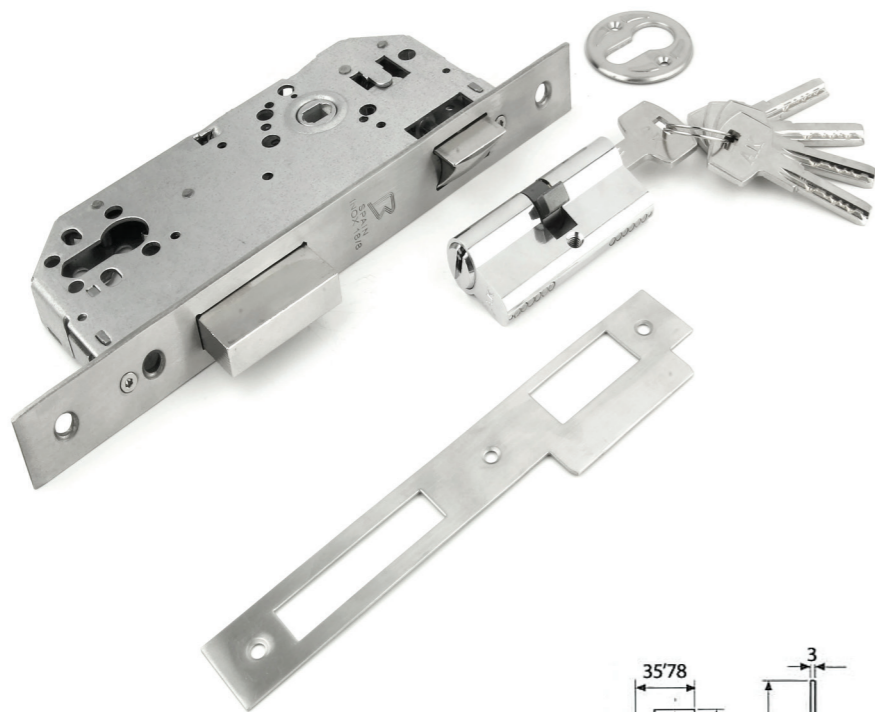
Reference	Finishes	Funtion	Notes
J103374	SS	Plate with Handle	To be install with mortise hole



ADAN

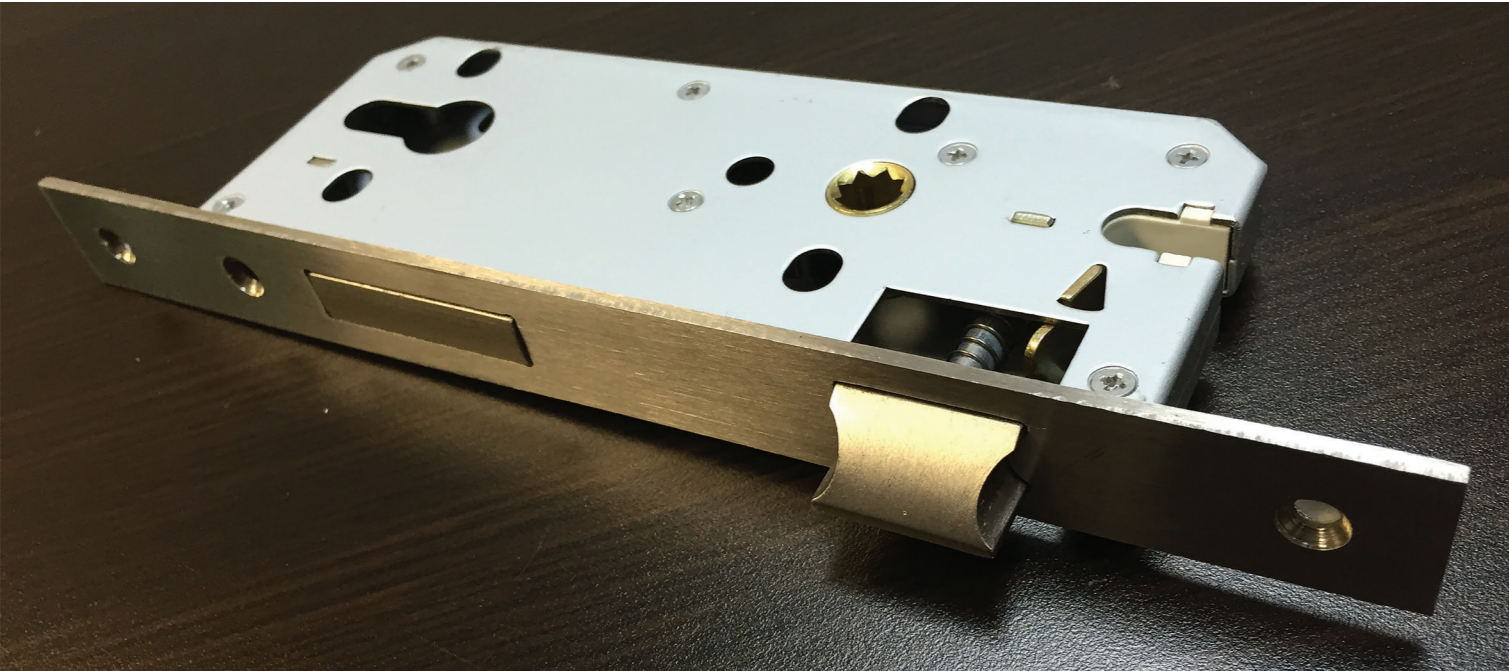
Reference	Finishes	Funtion	Notes
J103376	SS	Plate with Handle	To be install with mortise hole

MORTISE LOCKS FOR SLIDING DOOR

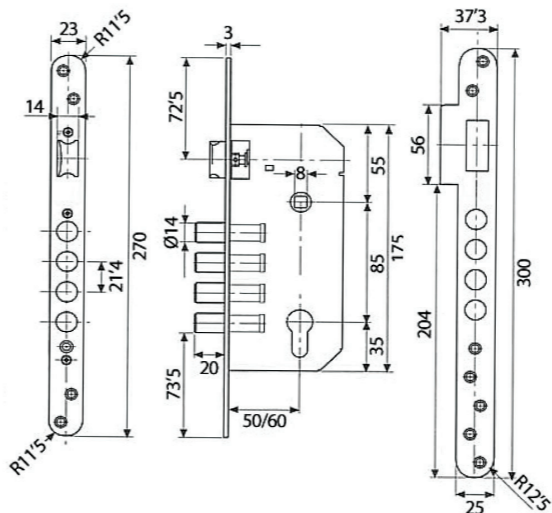


MORTISE LOCK FOR SLIDING DOOR

Reference	Finishes	Funtion	Notes
Jl03209	PC	Round	
Jl03210	PC	Square	
Jl03211	BN	Round	
Jl03212	BN	Square	



MORTISE LOCKS BOLTS DOOR



MORTISE LOCK FOR BOLTS DOOR

Reference	Finishes	Funtion	Notes
Jl02598	SS	For bolts Door	1.9 x 2.3" / 50 x 60 mm



MORTISE LOCKS



SIGLO

Reference	Finishes	Size	Notes
J100062	SS	2 x 2 x 3.3" / 50 x 50 x 83 mm	4 Bolts

CYLINDER



SQUARE & ROUND KEYHOLE MECHANISMS

Reference	Finishes	Funtion
J101373	BN	Square Keyhole
J100700	BN	Round Keyhole Rounded

CILYNDER FOR KEYHOLE MECHANISMS

Reference	Finishes	Funtion
J102096	BN	Cilynder 70 mm / 2.7"

CILYNDER FOR KEYHOLE MECHANISMS

Reference	Finishes	Funtion
J101316	PC / SS	Cilynder 60 mm / 2.36"

CILYNDER FOR KEYHOLE MECHANISMS

Reference	Finishes	Funtion
J102095	PC	Cilynder 70 mm / 2.7"

CYLINDER



MUR-2

Reference	Finishes	Funtion	Size
J100239	BN / SS	Set WC	2.0" / 53 mm



MURA-1

Reference	Finishes	Funtion	Notes
J100713	SS	Set WC	1.5" / 37 mm

MURA-3

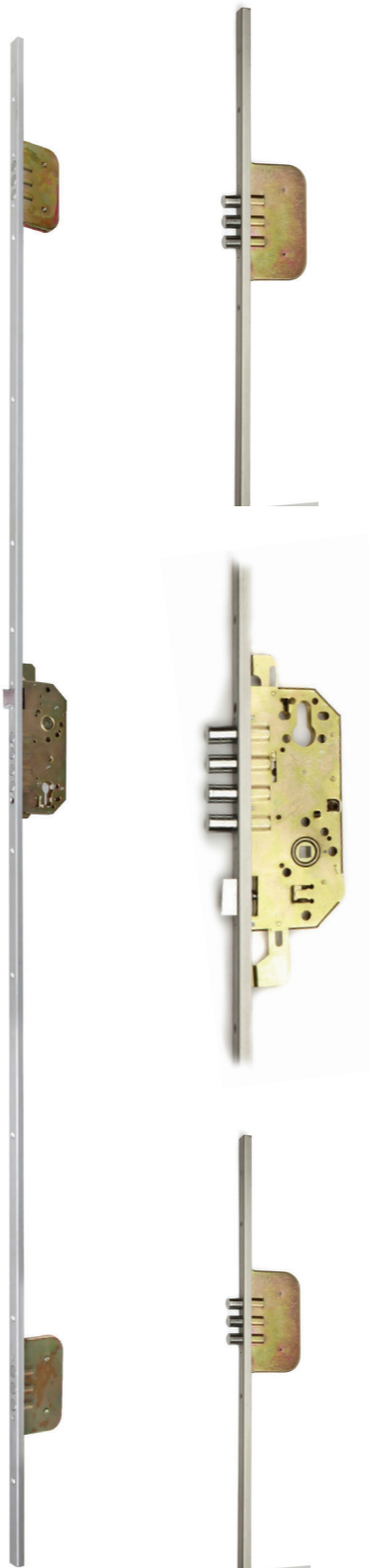
Reference	Finishes	Funtion	Notes
J100714	SS	Set WC	2.0" / 53 mm



MUR-C1

Reference	Finishes	Funtion	Notes
J100715	SS	Set WC	2.16" / 55 mm

MULTIPOINT



MULTI POINT LOCK WITH HIGH SECURITY CYLINDER

Reference	Finishes	Funtion	Notes
J101216	BN		79.9 x 1.57" / 2030 x 40 mm