



## DOOR STOPPERS



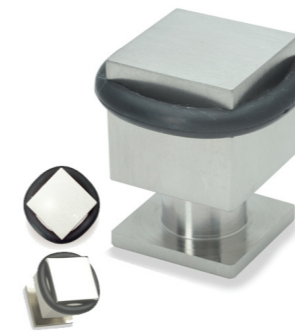
### DOOR STOPPER 1

Reference	Finishes
J102175	BN
J102175-CP	PC



### DOOR STOPPER 2

Reference	Finishes	Size
J100982	BN	0.98 x 0.78" / 25 x 20 mm
J101349	PSS	0.98 x 0.78" / 25 x 20 mm
J102939-CP	PC	0.98 x 0.78" / 25 x 20 mm
J102939	BN	0.98 x 0.78" / 25 x 20 mm



### DOOR STOPPER 4

Reference	Finishes	Model	Size
J101368	PSS	04	0.98 x 0.98" / 25 x 25 mm
J100910	SS	04 30"	0.98 x 0.98" / 25 x 25 mm
J102948-CP	PC	04 30"	0.98 x 0.98" / 25 x 25 mm
J102948	BN		0.98 x 0.98" / 25 x 25 mm



### MAGNETIC STOPPER

Reference	Finishes	Model	Notes
J102132	BN	Magnetic	3.0" / 78 mm
J102133	BC	Magnetic	3.14" / 80 mm

DOOR STOPPERS



HALF MOON I

Reference	Finishes	Notes
J102131	PC	1.57" / 40 mm
J102130	SS	1.57" / 40 mm



HALF MOON II

Reference	Finishes	Notes
J102176	SS	1.57" / 45 mm
J102176-CP	PC	

DOOR STOPPERS



MOD. 027 SHORT

Reference	Finishes	Notes
J102949	BN	3.34" / 85 mm



MADRID (Square)

Reference	Finishes	Model	Notes
J102173	SS	Madrid	3.0" / 78 mm
J102440	PC	Madrid	3.0" / 78 mm



MOD. 008 (with small plate)

Reference	Finishes	Model	Notes
J102302	BN	3.0" / 78 mm	with Small Plate
J102302-PC	PC		



MOD. 027

Reference	Finishes	Notes
J102091	BN	3.74" / 95 mm
J102092	PC	3.74" / 95 mm



MOD. NEXT

Reference	Finishes	Notes
J102092	PC	1.24" / 31.5 mm



TOP MOD. 011

Reference	Finishes	Notes
J102177	BN	4.1" / 101.6 mm