



CABINETS
HARDWARE
GABINETES

CABINET HANDLES



Zamak DINO 0053

Reference	Finishes	C1	C2	L	W	H	📦
J101699	PC	3 3/4" / 96 mm	5.03" / 128 mm	6 1/8" / 156 mm	1/4" / 7 mm	0.94" / 24 mm	25
J101701	PC	6 1/4" / 160 mm	7 1/2" / 192 mm	8 3/4" / 221 mm	1/4" / 7 mm	1 1/8" / 28 mm	25
J101702	PC	11 3/8" / 288 mm	12 5/8" / 320 mm	13 3/4" / 349 mm	1/4" / 7 mm	1 1/8" / 28 mm	25
J101700	BN	3 3/4" / 96 mm	5.03" / 128 mm	6 1/8" / 156 mm	1/4" / 7 mm	0.94" / 24 mm	25
J101933	BN	6 1/4" / 160 mm	7 1/2" / 192 mm	8 3/4" / 221 mm	1/4" / 7 mm	1 1/8" / 28 mm	25
J101935	BN	11 3/8" / 288 mm	12 5/8" / 320 mm	13 3/4" / 349 mm	1/4" / 7 mm	1 1/8" / 28 mm	25
J102655	AL	3 3/4" / 96 mm	5.03" / 128 mm	6 1/8" / 156 mm	1/4" / 7 mm	0.94" / 24 mm	25
J102590	AL	6 1/4" / 160 mm	7 1/2" / 192 mm	8 3/4" / 221 mm	1/4" / 7 mm	1 1/8" / 28 mm	25
SPECIAL ORDER	AL	11 3/8" / 288 mm	12 5/8" / 320 mm	13 3/4" / 349 mm	1/4" / 7 mm	1 1/8" / 28 mm	25

CABINET HANDLES



CABINET HANDLES



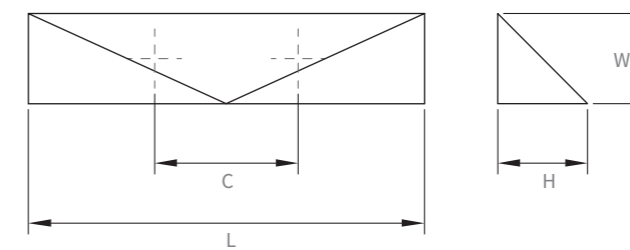
ALUMINIUM ASI 0341

Reference	Finishes	C	L	W	H	☐
J103328	PC	5 1/8" / 128 mm	5 3/4" / 146 mm	7/16" / 10,8 mm	1 1/2" / 36 mm	25
J103329	PC	7 9/16" / 192 mm	8 9/32" / 210 mm	7/16" / 10,8 mm	1 1/2" / 36 mm	25
J103330	PC	12 5/8" / 320 mm	13 5/16" / 338 mm	7/16" / 10,8 mm	1 1/2" / 36 mm	25
J103341	SS	5 1/8" / 128 mm	5 3/4" / 146 mm	7/16" / 10,8 mm	1 1/2" / 36 mm	25
J103342	SS	7 9/16" / 192 mm	8 9/32" / 210 mm	7/16" / 10,8 mm	1 1/2" / 36 mm	25
J103343	SS	12 5/8" / 320 mm	13 5/16" / 338 mm	7/16" / 10,8 mm	1 1/2" / 36 mm	25

CABINET HANDLES



CABINET HANDLES



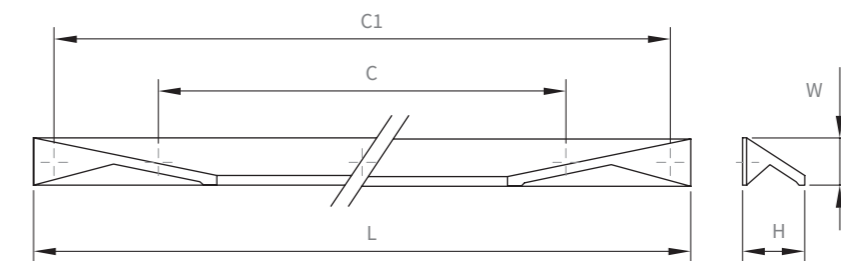
ZAMAK KARES 0306

Reference	Finishes	C	L	W	H	☐
J103147	PC	1.2" / 32 mm	3.4" / 88 mm	0.78" / 20 mm	0.78" / 20 mm	25
J103148	PC	3.7" / 96 mm	5.9" / 152 mm	0.78" / 20 mm	0.78" / 20 mm	25
J103114	PC	7.5" / 192 mm	12.2" / 312 mm	0.78" / 20 mm	0.78" / 20 mm	25
J103106	BN	1.2" / 32 mm	3.4" / 88 mm	0.78" / 20 mm	0.78" / 20 mm	25
J103119	BN	3.7" / 96 mm	5.9" / 152 mm	0.78" / 20 mm	0.78" / 20 mm	25
J103115	BN	7.5" / 192 mm	12.2" / 312 mm	0.78" / 20 mm	0.78" / 20 mm	25
J103107	Mate White	1.2" / 32 mm	3.4" / 88 mm	0.78" / 20 mm	0.78" / 20 mm	25
J103120	Mate White	3.7" / 96 mm	5.9" / 152 mm	0.78" / 20 mm	0.78" / 20 mm	25
J103149	Mate White	7.5" / 192 mm	12.2" / 312 mm	0.78" / 20 mm	0.78" / 20 mm	25

CABINET HANDLES



CABINET HANDLES



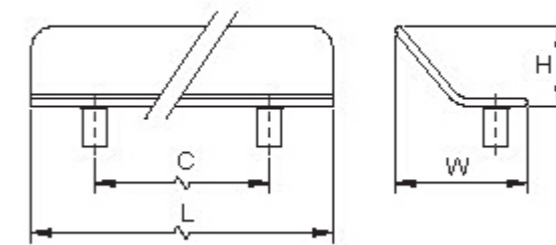
ALUMINIUM CUTT 0322

Reference	Finishes	C	C1	L	W	H	☐
J103308	PC	3.7" / 96 mm	5.03" / 128 mm	7.8" / 200 mm	0.6" / 17.5 mm	0.9" / 23 mm	25
J103310	PC	7.5" / 192 mm	12.5" / 320 mm	15.7" / 400 mm	0.6" / 17.5 mm	0.9" / 23 mm	25
J103312	PC	6 5/4" / 320 mm	18.8" / 480 mm	23.6" / 600 mm	0.6" / 17.5 mm	0.9" / 23 mm	25
J103309	SS	3.7" / 96 mm	5.03" / 128 mm	7.8" / 200 mm	0.6" / 17.5 mm	0.9" / 23 mm	25
J103311	SS	7.5" / 192 mm	12.5" / 320 mm	15.7" / 400 mm	0.6" / 17.5 mm	0.9" / 23 mm	25
J103313	SS	6 5/4" / 320 mm	18.8" / 480 mm	23.6" / 600 mm	0.6" / 17.5 mm	0.9" / 23 mm	25


CABINET HANDLES



CABINET HANDLES



Zamak THIN 230

Reference	Finishes	C	L	W	H	
J102764	PC	2 1/2" / 64 mm	3 3/4" / 96 mm	1 1/4" / 33 mm	3/4" / 19,7 mm	25
J102767	PC	6 1/4" / 160 mm	7 1/2" / 192 mm	1 1/4" / 33 mm	3/4" / 19,7 mm	25
J102765	BN	2 1/2" / 64 mm	3 3/4" / 96 mm	1 1/4" / 33 mm	3/4" / 19,7 mm	25
J102768	BN	6 1/4" / 160 mm	7 1/2" / 192 mm	1 1/4" / 33 mm	3/4" / 19,7 mm	25


CABINET HANDLES



CABINET HANDLES



ZAMAK + ACRYLIC DOMO 0294

Reference	Finishes	C	L	W	H	
J103295	Chrome + Matt transparent Knob	0.6" / 16 mm	1.9" / 50 mm	1.9" / 50 mm	1.2" / 30.5 mm	25
J103292	SS + Grey Knob	0.6" / 16 mm	1.9" / 50 mm	1.9" / 50 mm	1.2" / 30.5 mm	25
J103297	Chrome + Light brown Knob	0.6" / 16 mm	1.9" / 50 mm	1.9" / 50 mm	1.2" / 30.5 mm	25
J103293	SS + Light brown Knob	0.6" / 16 mm	1.9" / 50 mm	1.9" / 50 mm	1.2" / 30.5 mm	25 
J103291	SS + Matt transparent Knob	0.6" / 16 mm	1.9" / 50 mm	1.9" / 50 mm	1.2" / 30.5 mm	25
J103296	Chrome + Grey Knob	0.6" / 16 mm	1.9" / 50 mm	1.9" / 50 mm	1.2" / 30.5 mm	25
J103298	Chrome + Dark brown Knob	0.6" / 16 mm	1.9" / 50 mm	1.9" / 50 mm	1.2" / 30.5 mm	25
J103290	Black + Dark brown Knob	0.6" / 16 mm	1.9" / 50 mm	1.9" / 50 mm	1.2" / 30.5 mm	25
J103294	SS + Dark brown Knob	0.6" / 16 mm	1.9" / 50 mm	1.9" / 50 mm	1.2" / 30.5 mm	25


CABINET HANDLES



CABINET HANDLES



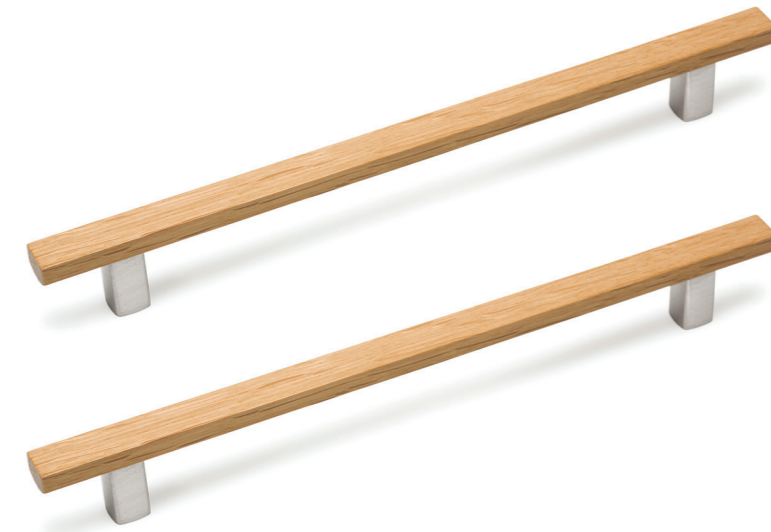
ALUMINIUM ARA 0239

Reference	Finishes	C	L	W	H	
J103314	PC	3 2/3" / 96 mm	6 5/8" / 156 mm	0.59" / 15 mm	1 3/16" / 30 mm	25
J103315	PC	7 9/16" / 192 mm	9 2/3" / 252 mm	0.59" / 15 mm	1 3/16" / 30 mm	25
J103316	PC	12 5/8" / 320 mm	14 3/3" / 380 mm	0.59" / 15 mm	1 3/16" / 30 mm	25


CABINET HANDLES



CABINET HANDLES



ALUMINIUM + WOOD ARA W _ 0239


Reference	Finishes	C	L	W	
J103317	Inox look + 17 Walnut / Nogal	6 5/4" / 160 mm	8 2/3" / 220 mm	0.59" / 15 mm	25
J103318	Inox look + 17 Walnut / Nogal	8 3/4" / 224 mm	11 3/4" / 284 mm	0.59" / 15 mm	25

CABINET HANDLES



CABINET HANDLES

ALUMINIUM BRIKK _ 0334

Reference	Finishes	C	C1	L	W	H	Holes	
J103271	PC	1.2" / 32 mm	2.1" / 54 mm	5.5" / 140 mm	0.5" / 14 mm	1.06" / 27 mm	2	15
J103272	PC	2.5" / 64 mm	2.4" / 63 mm	7.4" / 190 mm	0.5" / 14 mm	1.06" / 27 mm	2	15
J103301	PC	3.7" / 96 mm	2.9" / 74 mm	9.4" / 240 mm	0.5" / 14 mm	1.06" / 27 mm	2	15
J103274	PC	6.2" / 160 mm	2.5" / 65 mm	11.4" / 290 mm	0.5" / 14 mm	1.06" / 27 mm	2	15
J103275	PC	7.5" / 192 mm	2.9" / 72 mm	13.3" / 340 mm	0.5" / 14 mm	1.06" / 27 mm	2	15
J103276	PC	5.03" / 128 mm	2.5" / 65 mm	15.3" / 390 mm	0.5" / 14 mm	1.06" / 27 mm	4	15
J103277	PC	6.2" / 160 mm	2.5" / 65 mm	17.3" / 440 mm	0.5" / 14 mm	1.06" / 27 mm	4	10
J103278	PC	7.5" / 192 mm	2.5" / 65 mm	19.2" / 490 mm	0.5" / 14 mm	1.06" / 27 mm	4	10
J103279	PC	8.8" / 224 mm	2.5" / 65 mm	23.2" / 590 mm	0.5" / 14 mm	1.06" / 27 mm	4	10
J103280	PC	10" / 256 mm	2.5" / 65 mm	27.1" / 690 mm	0.5" / 14 mm	1.06" / 27 mm	4	10
J103282	PC	12.5" / 320 mm	2.5" / 65 mm	31.1" / 790 mm	0.5" / 14 mm	1.06" / 27 mm	4	10
J103284	PC	15.1" / 384 mm	2.5" / 65 mm	35" / 890 mm	0.5" / 14 mm	1.06" / 27 mm	4	5
J103299	SS	1.2" / 32 mm	2.1" / 54 mm	5.5" / 140 mm	0.5" / 14 mm	1.06" / 27 mm	2	15
J103300	SS	2.5" / 64 mm	2.4" / 63 mm	7.4" / 190 mm	0.5" / 14 mm	1.06" / 27 mm	2	15
J103273	SS	3.7" / 96 mm	2.8" / 72 mm	9.4" / 240 mm	0.5" / 14 mm	1.06" / 27 mm	2	15
J103302	SS	6.2" / 160 mm	2.5" / 65 mm	11.5" / 290 mm	0.5" / 14 mm	1.06" / 27 mm	2	15
J103303	SS	7.5" / 192 mm	2.9" / 74 mm	13.3" / 340 mm	0.5" / 14 mm	1.06" / 27 mm	2	15
J103304	SS	5.03" / 128 mm	2.5" / 65 mm	15.3" / 390 mm	0.5" / 14 mm	1.06" / 27 mm	4	15
J103305	SS	6.2" / 160 mm	2.5" / 65 mm	17.3" / 440 mm	0.5" / 14 mm	1.06" / 27 mm	4	10
J103306	SS	7.5" / 192 mm	2.5" / 65 mm	19.2" / 490 mm	0.5" / 14 mm	1.06" / 27 mm	4	10
J103307	SS	8.8" / 224 mm	2.5" / 65 mm	23.2" / 590 mm	0.5" / 14 mm	1.06" / 27 mm	4	10
J103281	SS	10.0" / 256 mm	2.5" / 65 mm	27.1" / 690 mm	0.5" / 14 mm	1.06" / 27 mm	4	10
J103283	SS	12.5" / 320 mm	2.5" / 65 mm	31.1" / 790 mm	0.5" / 14 mm	1.06" / 27 mm	4	10
J103285	SS	15.1" / 384 mm	2.5" / 65 mm	35" / 890 mm	0.5" / 14 mm	1.06" / 27 mm	4	5

CABINET HANDLES



WOOD TACCO _ 0326

Reference	Finishes	C	L	W	H	📦
0326032W18	Ash	1.2" / 32 mm	3.6" / 92.3 mm	3.2" / 83.6 mm	0.6" / 16 mm	25
0326032W19	Walnut	1.2" / 32 mm	3.6" / 92.3 mm	3.2" / 83.6 mm	0.6" / 16 mm	25
0326032W00	Beech Raw	1.2" / 32 mm	3.6" / 92.3 mm	3.2" / 83.6 mm	0.6" / 16 mm	25



CABINET HANDLES

ZAMAK HIDE _ 0094

Reference	Finishes	C	L	W	H	📦
J103326	PC	2.5" / 64 mm	3.5" / 90 mm	0.68" / 17.4 mm	0.64" / 16.5 mm	25
J102748	PC	5.03" / 128 mm	7.08" / 180 mm	0.68" / 17.4 mm	0.64" / 16.5 mm	25
J103327	BN	2.5" / 64 mm	3.5" / 90 mm	0.68" / 17.4 mm	0.64" / 16.5 mm	25
J102747	BN	5.03" / 128 mm	7.08" / 180 mm	0.68" / 17.4 mm	0.64" / 16.5 mm	25




CABINET HANDLES



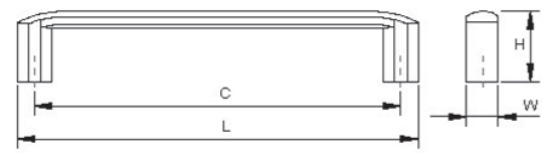
CABINET HANDLES



STAINLESS STEEL DIDAL _ 0329

Reference	Finishes	D1	D2	H	
J103320	Brush SS	0.74" / 19 mm	1.14" / 29 mm	0.92" / 23.5 mm	25
J103319	Polish SS	0.74" / 19 mm	1.14" / 29 mm	0.92" / 23.5 mm	25

CABINET HANDLES

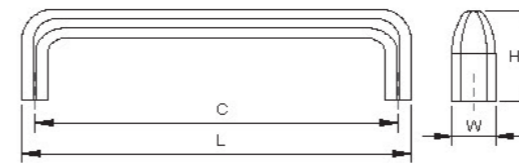


Zamak ROMA 0241

Reference	Finishes	C	L	W	H	☐
J102727	PC	6 1/4" / 160 mm	6 7/8" / 175 mm	1/2" / 14 mm	1 1/8" / 30 mm	25
J102729	PC	7 1/2" / 192 mm	8 1/8" / 207 mm	1/2" / 14 mm	1 1/8" / 30 mm	25
SPECIAL ORDER	PC	12 5/8" / 320 mm	13 1/4" / 335 mm	1/2" / 14 mm	1 1/8" / 30 mm	25
J102728	BN	6 1/4" / 160 mm	6 7/8" / 175 mm	1/2" / 14 mm	1 1/8" / 30 mm	25
J102730	BN	7 1/2" / 192 mm	8 1/8" / 207 mm	1/2" / 14 mm	1 1/8" / 30 mm	25
SPECIAL ORDER	BN	12 5/8" / 320 mm	13 1/4" / 335 mm	1/2" / 14 mm	1 1/8" / 30 mm	25



CABINET HANDLES

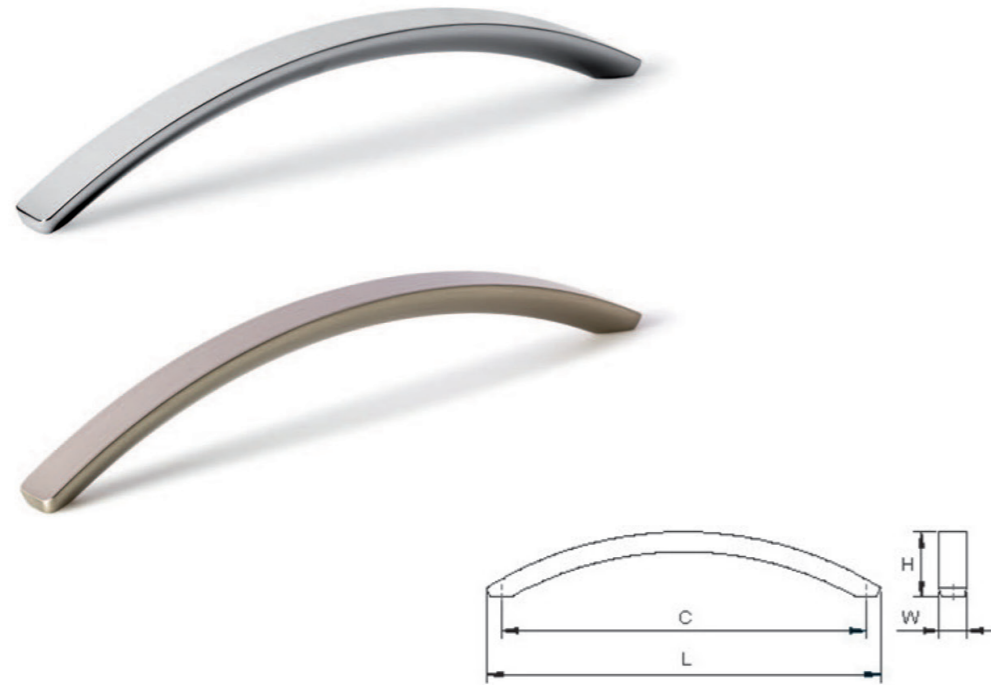


Zamak REDO 0226

Reference	Finishes	C	L	W	H	☐
J102653	PC	5" / 128 mm	5 3/8" / 137 mm	5/8" / 15 mm	1 1/4" / 32 mm	25
SPECIAL ORDER	PC	7 1/2" / 192 mm	7 7/8" / 201 mm	5/8" / 15 mm	1 1/4" / 32 mm	25
J102654	BN	5.03" / 128 mm	5 3/8" / 137 mm	5/8" / 15 mm	1 1/4" / 32 mm	25
SPECIAL ORDER	BN	7 1/2" / 192 mm	7 7/8" / 201 mm	5/8" / 15 mm	1 1/4" / 32 mm	25



CABINET HANDLES



Zamak ARCH 0206

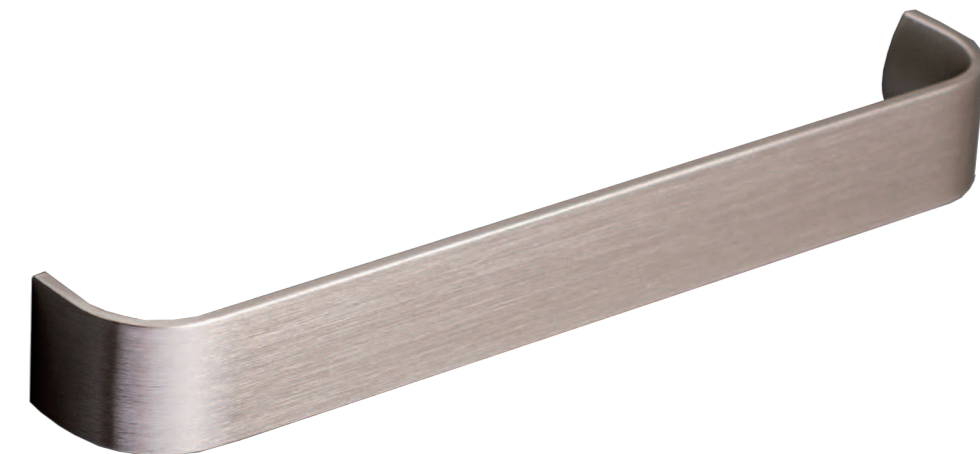
Reference	Finishes	C	L	W	H	
J102726	PC	7 1/2" / 192 mm	8 1/4" / 208 mm	5/8" / 14,5 mm	1 3/8" / 36 mm	25
J102741	BN	7 1/2" / 192 mm	8 1/4" / 208 mm	5/8" / 14,5 mm	1 3/8" / 36 mm	25



CABINET HANDLES

Aluminum SENSE 0195

Reference	Finishes	C	L	W	H	
J102668	PC	5.03" / 128 mm	5 1/4" / 135 mm	0.98" / 25 mm	1 1/8" / 29.5 mm	25
J102667	PC	7 1/2" / 192 mm	7 7/8" / 199 mm	0.98" / 25 mm	1 1/8" / 29.5 mm	25
J102743	PC	12 5/8" / 320 mm	12 7/8" / 327 mm	0.98" / 25 mm	1 1/8" / 29.5 mm	25
J102668	PC	18 7/8" / 480 mm	3.4" / 487 mm	0.98" / 25 mm	1 1/8" / 29.5 mm	25
J102669	BN	5.03" / 128 mm	5 1/4" / 135 mm	0.98" / 25 mm	1 1/8" / 29.5 mm	25
J102670	BN	7 1/2" / 192 mm	7 7/8" / 199 mm	0.98" / 25 mm	1 1/8" / 29.5 mm	25
J102671	BN	12 5/8" / 320 mm	12 7/8" / 327 mm	0.98" / 25 mm	1 1/8" / 29.5 mm	25
J102668	PC	18 7/8" / 480 mm	3.4" / 487 mm	0.98" / 25 mm	1 1/8" / 29.5 mm	25
J102672	BN	18 7/8" / 480 mm	3.4" / 487 mm	0.98" / 25 mm	1 1/8" / 29.5 mm	25

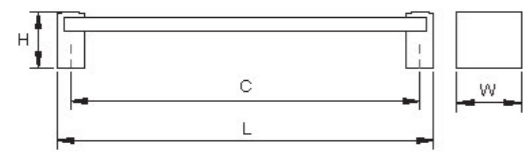


CABINET HANDLES

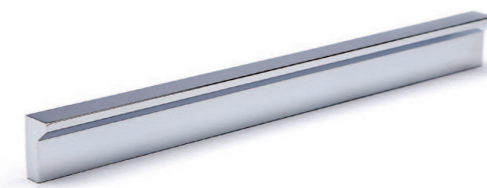


Zamak + GLASS 0092

Reference	Finishes	C	L	W	H	☐
J102685	PC + TG	1 1/8" / 30 mm	1 3/8" / 35 mm	1 1/4" / 31 mm	25	
J102715	PC + TG	6 1/4" / 160 mm	6 7/8" / 175 mm	1 3/8" / 35 mm	1 1/4" / 31 mm	25
J101961	PC + TG	7 1/2" / 192 mm	8 1/8" / 207 mm	1 3/8" / 35 mm	1 1/4" / 31 mm	25
J101962	PC + TG	12 5/8" / 320 mm	13 1/4" / 335 mm	1 3/8" / 35 mm	1 1/4" / 31 mm	25

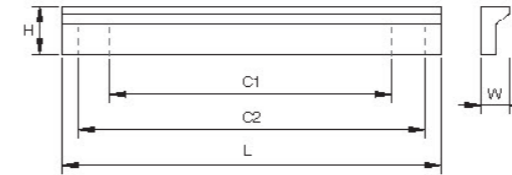


CABINET HANDLES



Aluminum ANGLE 0077

Reference	Finishes	C1	C2	L	W	H	☐
J101988	PC	2 1/2" / 64 mm		3.93" / 100 mm	3/8" / 11 mm	3/4" / 19.5 mm	25
J101989 / J101780	PC	5.03" / 128 mm	6 1/4" / 160 mm	7 7/8" / 200 mm	3/8" / 11 mm	3/4" / 19.5 mm	25
J101781	PC	7 1/2" / 192 mm		11 3/4" / 300 mm	3/8" / 11 mm	3/4" / 19.5 mm	25
J101783	PC	10 1/8" / 256 mm		16 3/4" / 400 mm	3/8" / 11 mm	3/4" / 19.5 mm	25
J101785	PC	16 3/8" / 416 mm		19 3/4" / 500 mm	3/8" / 11 mm	3/4" / 19.5 mm	25
J101786	PC	20 1/8" / 512 mm		23 5/8" / 600 mm	3/8" / 11 mm	3/4" / 19.5 mm	25
J101787	PC	26 1/4" / 640 mm		36 3/8" / 900 mm	3/8" / 11 mm	3/4" / 19.5 mm	25
J103246	SS	2 1/2" / 64 mm		3.93" / 100 mm	3/8" / 11 mm	3/4" / 19.5 mm	25
J103247	SS	5.03" / 128 mm	6 1/4" / 160 mm	7 7/8" / 200 mm	3/8" / 11 mm	3/4" / 19.5 mm	25
J103248	SS	7 1/2" / 192 mm		11 3/4" / 300 mm	3/8" / 11 mm	3/4" / 19.5 mm	25
J103249	SS	10 1/8" / 256 mm		16 3/4" / 400 mm	3/8" / 11 mm	3/4" / 19.5 mm	25
J103250	SS	16 3/8" / 416 mm		19 3/4" / 500 mm	3/8" / 11 mm	3/4" / 19.5 mm	25
J103251	SS	20 1/8" / 512 mm		23 5/8" / 600 mm	3/8" / 11 mm	3/4" / 19.5 mm	25
SPECIAL ORDER	SS	25 1/4" / 640 mm		36 3/8" / 900 mm	3/8" / 11 mm	3/4" / 19.5 mm	25

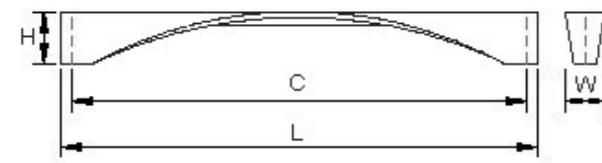


CABINET HANDLES



Zamak TWISTED 0108

Reference	Finishes	C	L	W	H	
J102436	PC	6 1/4" / 160 mm	6 3/4" / 170 mm	3/4" / 20 mm	1.02" / 26 mm	25
J102437	PC	8 7/8" / 224 mm	9 1/4" / 234 mm	3/4" / 20 mm	1.02" / 26 mm	25
J102438	PC	12 5/8" / 320 mm	13 3/8" / 340 mm	3/4" / 20 mm	1.02" / 26 mm	25
J102397	BN	6 1/4" / 160 mm	6 3/4" / 170 mm	3/4" / 20 mm	1.02" / 26 mm	25
SPECIAL ORDER	BN	8 7/8" / 224 mm	9 1/4" / 234 mm	3/4" / 20 mm	1.02" / 26 mm	25
J102399	BN	12 5/8" / 320 mm	13 3/8" / 340 mm	3/4" / 20 mm	1.02" / 26 mm	25

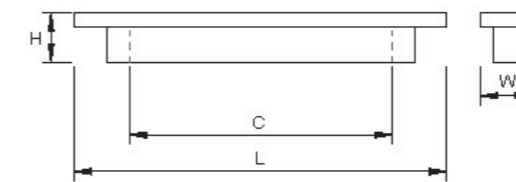


CABINET HANDLES

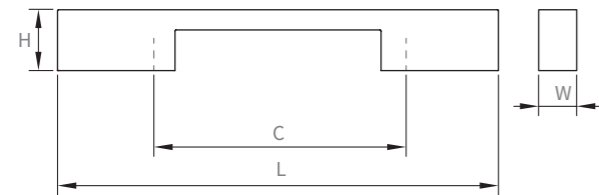
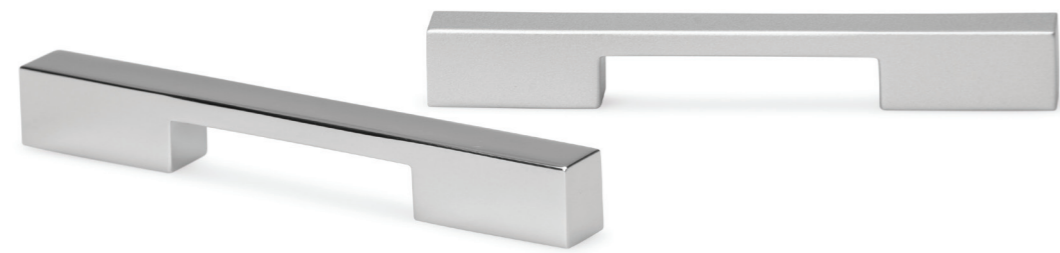


Zamak TABLE 0069

Reference	Finishes	C	L	W	H	
J101763	PC+++	1 1/4" / 32 mm	2 7/8" / 72 mm	3/4" / 20 mm	0.70" / 18 mm	25
J102405	PC	2 1/2" / 64 mm	4 1/8" / 104 mm	3/4" / 20 mm	0.70" / 18 mm	25
J102306	PC	3 3/4" / 96 mm	5 3/8" / 136 mm	3/4" / 20 mm	0.70" / 18 mm	25
J101767	PC	5.03" / 128 mm	6 5/8" / 168 mm	3/4" / 20 mm	0.70" / 18 mm	25
J101764	CL	1 1/4" / 32 mm	2 7/8" / 72 mm	3/4" / 20 mm	0.70" / 18 mm	25
J101765	CL	2 1/2" / 64 mm	4 1/8" / 104 mm	3/4" / 20 mm	0.70" / 18 mm	25
J101766	CL	3 3/4" / 96 mm	5 3/8" / 136 mm	3/4" / 20 mm	0.70" / 18 mm	25
J101768	CL	5.03" / 128 mm	6 5/8" / 168 mm	3/4" / 20 mm	0.70" / 18 mm	25



CABINET HANDLES

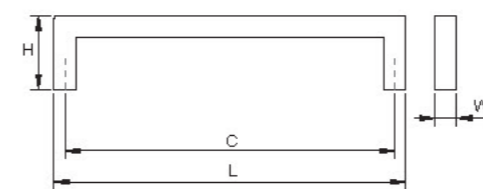
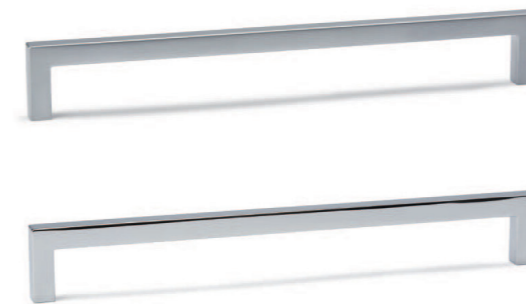


Zamak TOOL 0072

Reference	Finishes	C	L	W	H	
J101769	PC	2.51" / 64 mm	4 1/2" / 114 mm	0.47" / 12 mm	0.59" / 15 mm	25
J101770	PC	2.51" / 64 mm	4 1/2" / 114 mm	0.47" / 12 mm	0.59" / 15 mm	25



CABINET HANDLES



Zamak U 0056

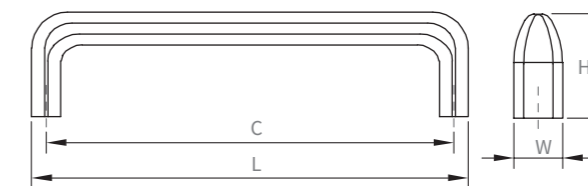
Reference	Finishes	C	L	W	H	
J101716	PC	5.03" / 128 mm	6 3/8" / 136.5 mm	3/8" / 8.5 mm	1 1/8" / 28.5 mm	25
J101718	PC	7 1/2" / 192 mm	7 7/8" / 200.5 mm	3/8" / 8.5 mm	1 1/8" / 28.5 mm	25
J101720	PC	12 5/8" / 320 mm	12 7/8" / 328.5 mm	3/8" / 8.5 mm	1 1/8" / 28.5 mm	25
J101722	PC	19 3/8" / 492 mm	19 3/4" / 500.5 mm	3/8" / 8.5 mm	1 1/8" / 28.5 mm	25
J101717	MC	5.03" / 128 mm	6 3/8" / 136.5 mm	3/8" / 8.5 mm	1 1/8" / 28.5 mm	25
J101719	MC	7 1/2" / 192 mm	7 7/8" / 200.5 mm	3/8" / 8.5 mm	1 1/8" / 28.5 mm	25
J101721	MC	12 5/8" / 320 mm	12 7/8" / 328.5 mm	3/8" / 8.5 mm	1 1/8" / 28.5 mm	25
J101723	MC	19 3/8" / 492 mm	19 3/4" / 500.5 mm	3/8" / 8.5 mm	1 1/8" / 28.5 mm	25
J101942	BN	5.03" / 128 mm	6 3/8" / 136.5 mm	3/8" / 8.5 mm	1 1/8" / 28.5 mm	25
J101943	BN	7 1/2" / 192 mm	7 7/8" / 200.5 mm	3/8" / 8.5 mm	1 1/8" / 28.5 mm	25
J101944	BN	12 5/8" / 320 mm	12 7/8" / 328.5 mm	3/8" / 8.5 mm	1 1/8" / 28.5 mm	25
J102305	BN	19 3/8" / 492 mm	19 3/4" / 500.5 mm	3/8" / 8.5 mm	1 1/8" / 28.5 mm	25



CABINET HANDLES



CABINET HANDLES



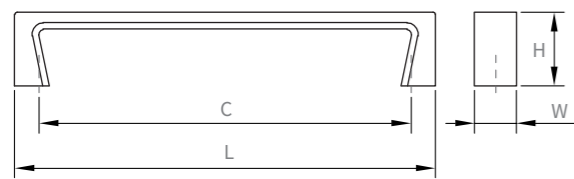
ZAMAK REDO _ 0226

Reference	Finishes	C	L	W	H	☐
J102653	PC	5.0" / 128 mm	5.3" / 137 mm	0.5" / 15 mm	1.2" / 32 mm	25
J102654	BN	5.0" / 128 m,m	5.3" / 137 mm	0.5" / 15 mm	1.2" / 32 mm	25

CABINET HANDLES

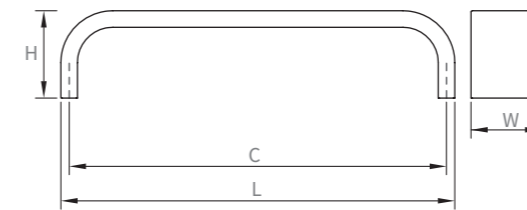


CABINET HANDLES



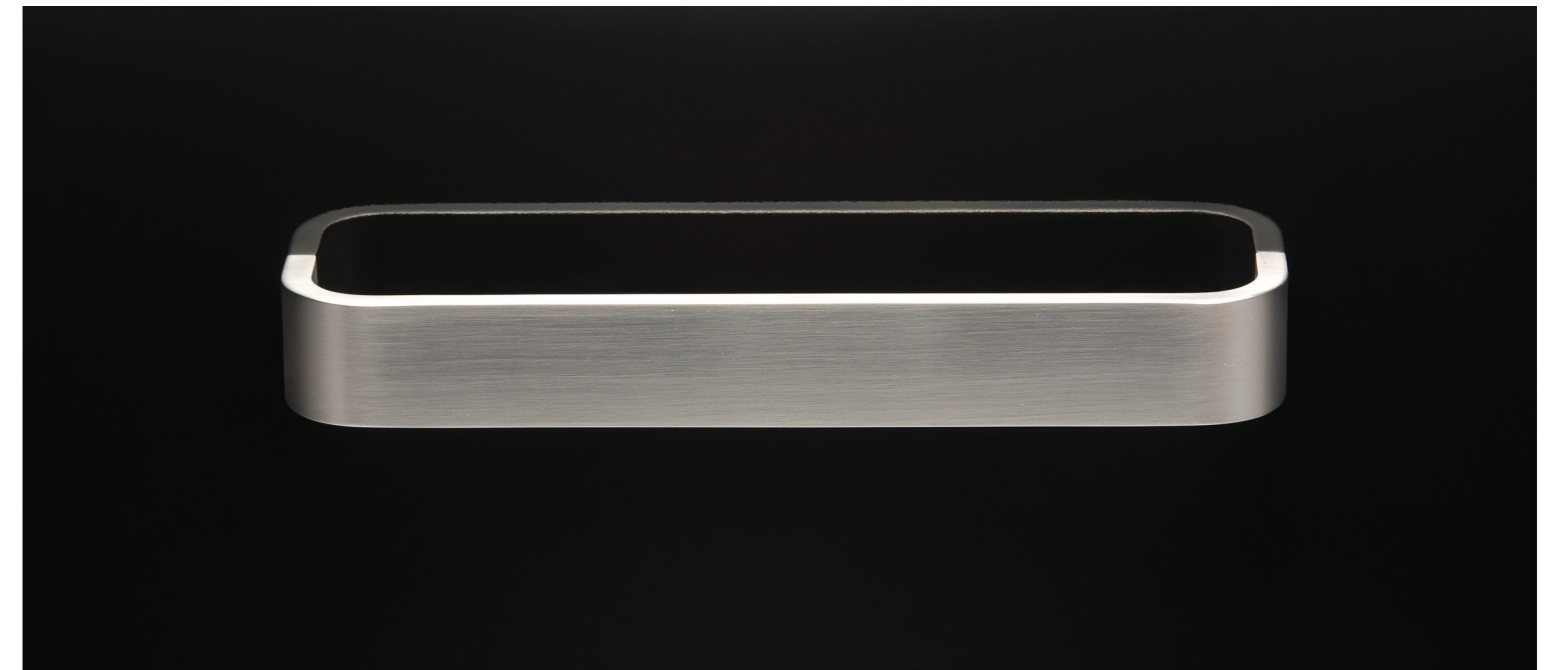
ZAMAK ELLY_0112

Reference	Finishes	C	L	W	H	
J101969	PC	6.2" / 160 mm	7.0" / 180 mm	0.7" / 18 mm	1.25" / 32 mm	25
J101951	BN	6.2" / 160 mm	7.0" / 180 mm	0.7" / 18 mm	1.25" / 32 mm	25



ZAMAK WIDE_0057

Reference	Finishes	C	L	W	H	
J101724	BN	6.2" / 160 mm	6.5" / 167 mm	1.18" / 30 mm	1.4" / 37 mm	25
J101725	BN	8.8" / 224 mm	9.0" / 231 mm	1.18" / 30 mm	1.4" / 37 mm	25

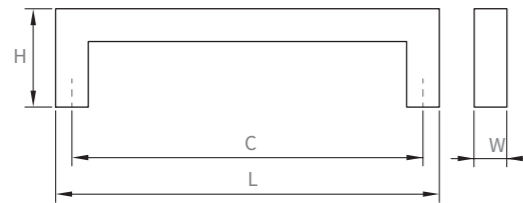


CABINET HANDLES



STAINLESS STEEL FORT_0076

Reference	Finishes	C	L	W	H	
J101773	SS	5.0" / 128 mm	5.5" / 142 mm	0.5" / 15 mm	1.5" / 40 mm	25
J101774	SS	6.2" / 160 mm	6.8" / 174 mm	0.5" / 15 mm	1.5" / 40 mm	25
J101775	SS	7.5" / 192 mm	8.1" / 206 mm	0.5" / 15 mm	1.5" / 40 mm	25
J101776	SS	10.0" / 256 mm	10.6" / 270 mm	0.5" / 15 mm	1.5" / 40 mm	25
J101777	SS	12.5" / 320 mm	13.1" / 334 mm	0.5" / 15 mm	1.5" / 40 mm	25
J101778	SS	19.3" / 492 mm	19.2" / 506 mm	0.5" / 15 mm	1.5" / 40 mm	25
J102877	SS	23.3" / 592 mm	23.8" / 606 mm	0.5" / 15 mm	1.5" / 40 mm	25
J102878	SS	27.2" / 692 mm	27.7" / 706 mm	0.5" / 15 mm	1.5" / 40 mm	25

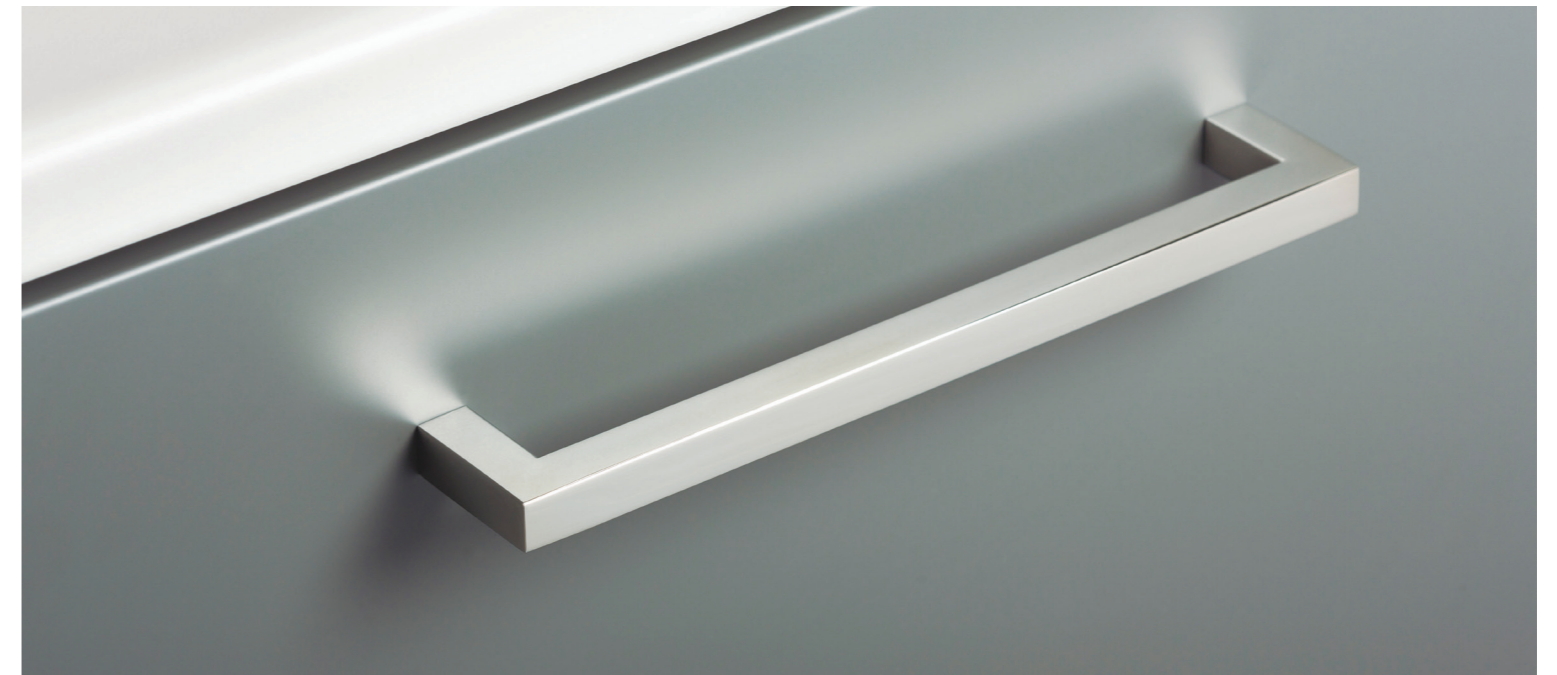
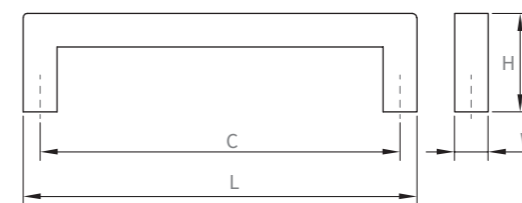


CABINET HANDLES



STAINLESS STEEL FERRI_0249

Reference	Finishes	C	L	W	H	
J103188	PC / SS	7.5" / 192 mm	8.0" / 204 mm	0.47" / 12 mm	1.3" / 35 mm	25
J103187	PC / SS	20" / 512 mm	20.6" / 524 mm	0.47" / 12 mm	1.3" / 35 mm	25

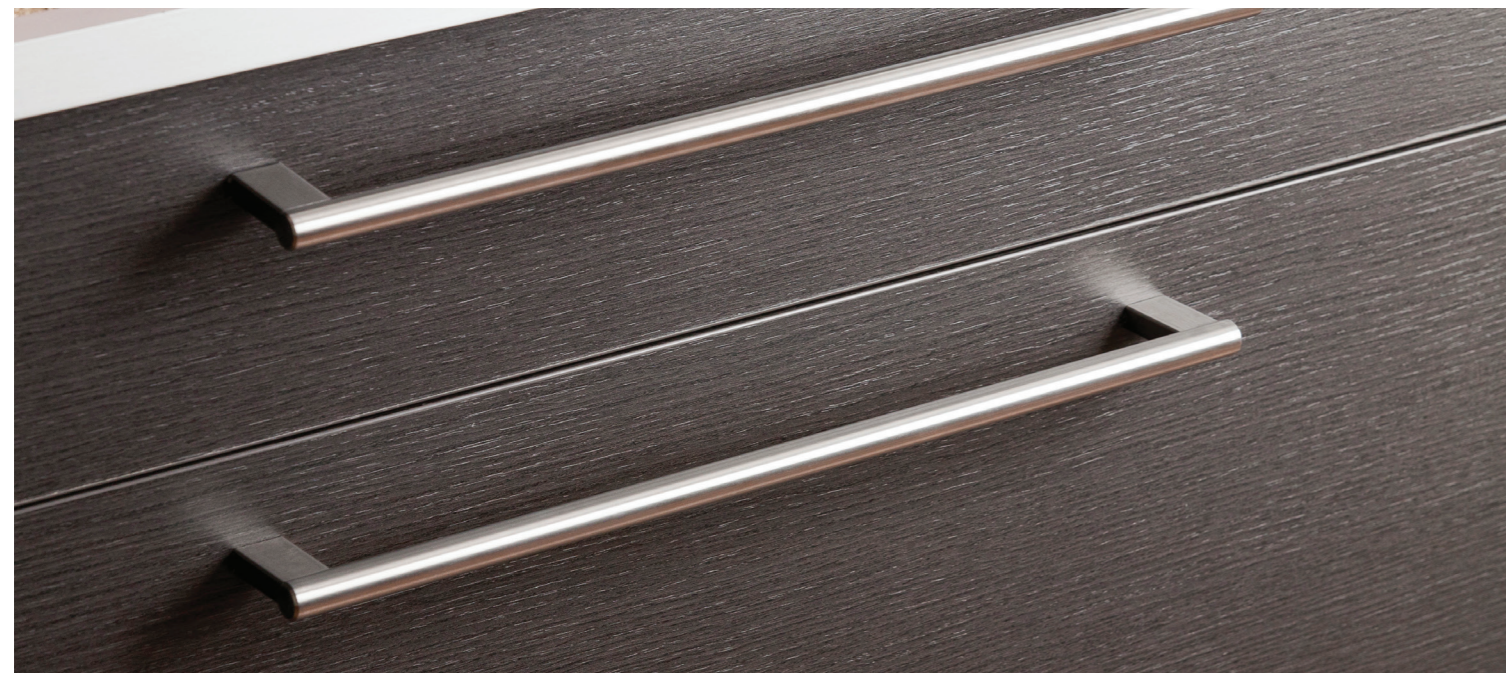
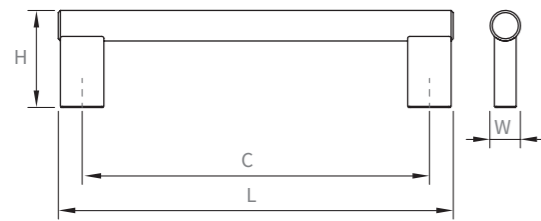


CABINET HANDLES



STAINLESS STEEL KOMBI _ 0064

Reference	Finishes	C	L	W	H	☐
J102673	SS	6.2" / 160 mm	7.1" / 182 mm	0.5" / 14 mm	1.7" / 44,5 mm	25
J102674	SS	7.5" / 192 mm	8.4" / 214 mm	0.5" / 14 mm	1.7" / 44,5 mm	25
J102893	SS	11.4" / 292 mm	12.3" / 314 mm	0.5" / 14 mm	1.7" / 44,5 mm	25
J102675	SS	13.4" / 342 mm	14.3" / 364 mm	0.5" / 14 mm	1.7" / 44,5 mm	25
J102676	SS	15.4" / 392 mm	16.2" / 414 mm	0.5" / 14 mm	1.7" / 44,5 mm	25
J102677	SS	19.3" / 492 mm	20.2" / 514 mm	0.5" / 14 mm	1.7" / 44,5 mm	25
J102678	SS	31" / 792 mm	32" / 814 mm	0.5" / 14 mm	1.7" / 44,5 mm	25
J102679	SS	43" / 1092 mm	43.8" / 1114 mm	0.5" / 14 mm	1.7" / 44,5 mm	25

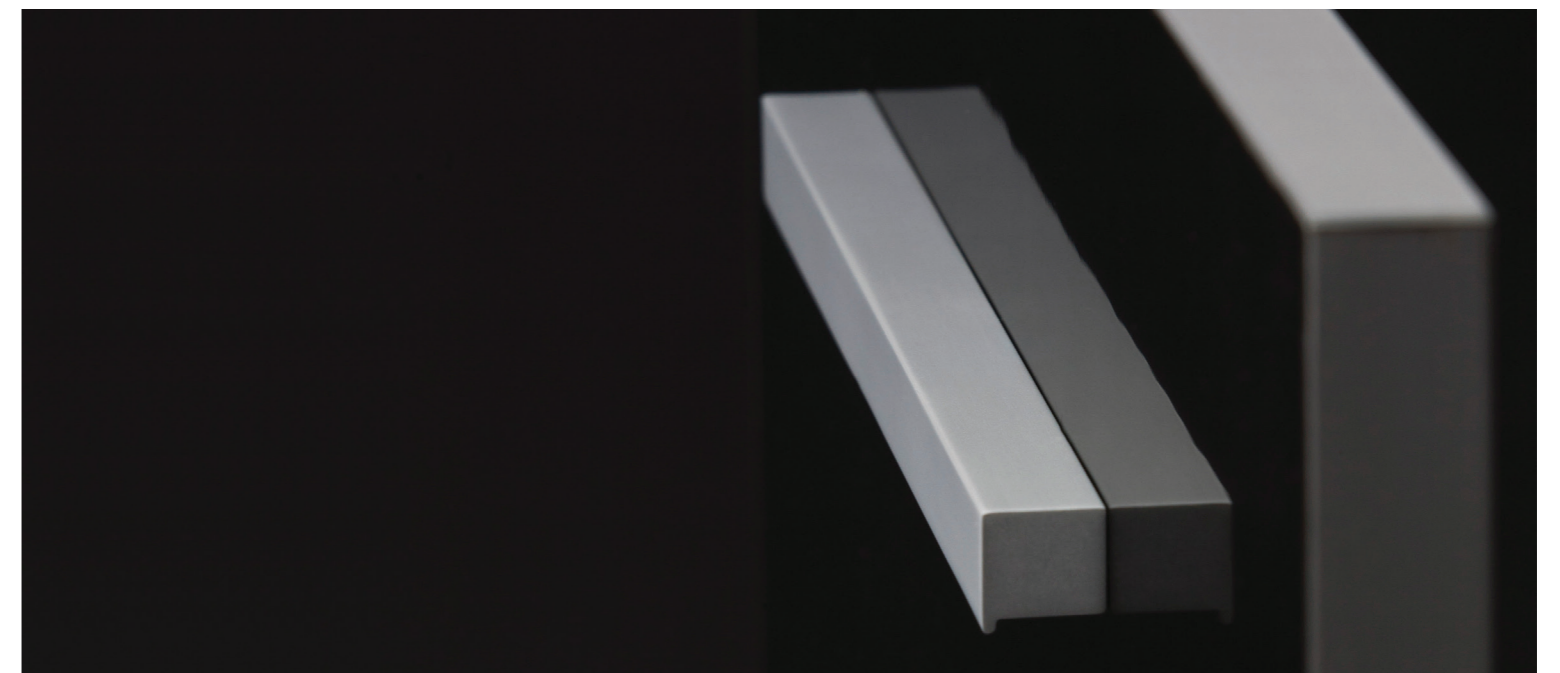
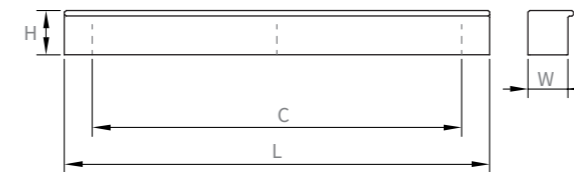


CABINET HANDLES



ALUMINIUM STEP _ 0060

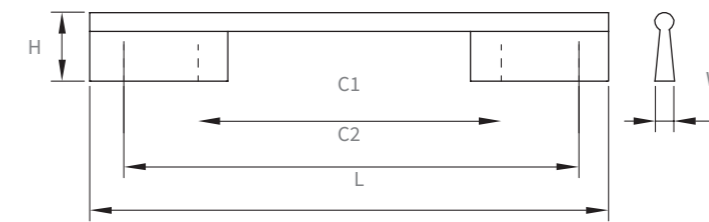
Reference	Finishes	C	L	W	H	☐
J102404	PC	1.25" / 32 mm	3.14" / 80 mm	0.62" / 16 mm	0.62" / 16 mm	25
J101731	PC	3.77" / 96 mm	5.9" / 150 mm	0.62" / 16 mm	0.62" / 16 mm	25
J101732	PC	6.2" / 160 mm	9.8" / 250 mm	0.62" / 16 mm	0.62" / 16 mm	25
J101733	PC	8.8" / 224 mm	13.7" / 350 mm	0.62" / 16 mm	0.62" / 16 mm	25
J101734	PC	18.8" / 480 mm	21.6" / 550 mm	0.62" / 16 mm	0.62" / 16 mm	25




CABINET HANDLES



CABINET HANDLES



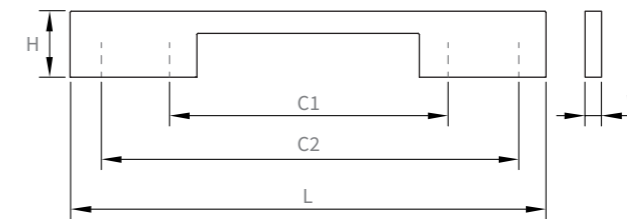
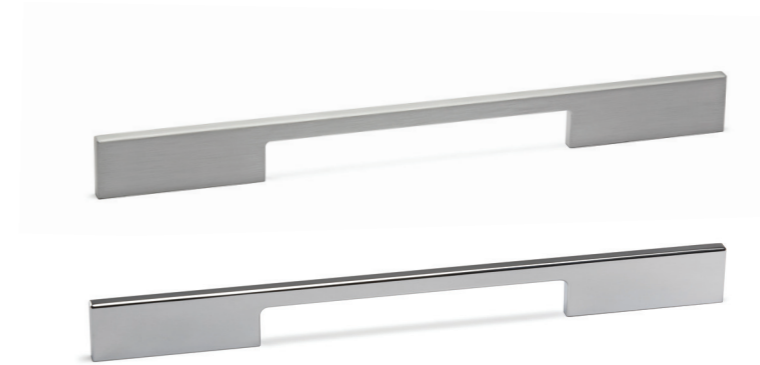
ALUMINUM ICON_0067

Reference	Finishes	C1	C2	L	W	H	
J101737	PC	6.2" / 160 mm		8.2" / 209 mm	0.4" / 12 mm	1.7" / 45 mm	25
J101738	PC	8.8" / 224 mm		12" / 309 mm	0.4" / 12 mm	1.7" / 45 mm	25
J101739	PC	10" / 256 mm		14" / 359 mm	0.4" / 12 mm	1.7" / 45 mm	25
J102732	PC	11.3" / 288 mm		16" / 409 mm	0.4" / 12 mm	1.7" / 45 mm	25
J101740	PC	6.2" / 160 mm	18.8" / 480 mm	20" / 509 mm	0.4" / 12 mm	1.7" / 45 mm	25
J102733	PC	6.2" / 160 mm	22.6" / 576 mm	23.9" / 609 mm	0.4" / 12 mm	1.7" / 45 mm	25
J102735	PC	6.2" / 160 mm	26.4" / 672 mm	27.9" / 709 mm	0.4" / 12 mm	1.7" / 45 mm	25
J102736	PC	6.2" / 160 mm	30.2" / 768 mm	31.8" / 809 mm	0.4" / 12 mm	1.7" / 45 mm	20
J102734	PC	6.2" / 160 mm	41.5" / 1056 mm	43.6" / 1109 mm	0.4" / 12 mm	1.7" / 45 mm	12

CABINET HANDLES



CABINET HANDLES



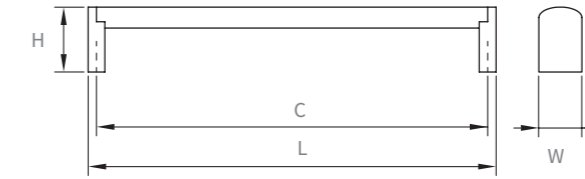
ALUMINUM TWIN _ 0055

References	Finishes	C1	C2	L	W	H	☐
J101938	PC	5.0" / 128 mm		5.9" / 152 mm	0.29" / 7,5 mm	1.18" / 30 mm	25
J101710	PC	7.5" / 192 mm		8.5" / 216 mm	0.29" / 7,5 mm	1.18" / 30 mm	25
J101712	PC	10" / 256 mm		12.4" / 316 mm	0.29" / 7,5 mm	1.18" / 30 mm	25
J101715	PC	11.3" / 288 mm	18.8" / 480 mm	20.3" / 516 mm	0.29" / 7,5 mm	1.18" / 30 mm	25
J102465	PC	18.8" / 480 mm	26.4" / 672 mm	28" / 716 mm	0.29" / 7,5 mm	1.18" / 30 mm	25
J101939	BC	5.0" / 128 mm		5.9" / 152 mm	0.29" / 7,5 mm	1.18" / 30 mm	25
J101711	BC	7.5" / 192 mm		8.5" / 216 mm	0.29" / 7,5 mm	1.18" / 30 mm	25
J102304	BC	10" / 256 mm		12.4" / 316 mm	0.29" / 7,5 mm	1.18" / 30 mm	25
J101713	BC	11.3" / 288 mm		14.4" / 366 mm	0.29" / 7,5 mm	1.18" / 30 mm	25
J101714	BC	10" / 256 mm	15" / 384 mm	16.3" / 416 mm	0.29" / 7,5 mm	1.18" / 30 mm	25
J102464	BC	13.8" / 352 mm	22.6" / 576 mm	24.2" / 616 mm	0.29" / 7,5 mm	1.18" / 30 mm	25
J102466	BC	18.8" / 480 mm	26.4" / 672 mm	28.1" / 716 mm	0.29" / 7,5 mm	1.18" / 30 mm	25
J103216	BC	12.5" / 320 mm					25
J102937	AL	18.8" / 480 mm					25
J103215	AL	12.5" / 320 mm					25

CABINET HANDLES



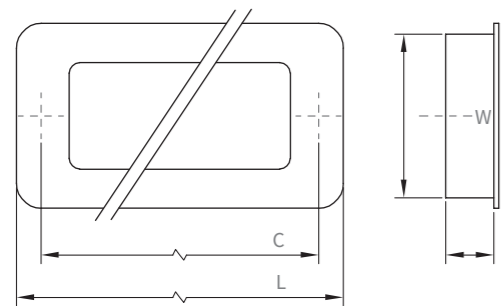
CABINET HANDLES



STAINLESS STEEL OVAL_0075

Reference	Finishes	C	L	W	H
J102716	SS	6.2" / 160 mm	6.6" / 168 mm	0.8" / 21 mm	1.2" / 31 mm
J102717	SS	7.5" / 192 mm	7.8" / 200 mm	0.8" / 21 mm	1.2" / 31 mm
J102718	SS	9.5" / 242 mm	9.8" / 250 mm	0.8" / 21 mm	1.2" / 31 mm
J102719	SS	11.4" / 292 mm	11.8" / 300 mm	0.8" / 21 mm	1.2" / 31 mm
J102720	SS	15.4" / 392 mm	15.7" / 400 mm	0.8" / 21 mm	1.2" / 31 mm
J102721	SS	19.3" / 492 mm	19.6" / 500 mm	0.8" / 21 mm	1.2" / 31 mm
J102722	SS	23.3" / 592 mm	23.6" / 600 mm	0.8" / 21 mm	1.2" / 31 mm
J102723	SS	27.2" / 692 mm	27.5" / 700 mm	0.8" / 21 mm	1.2" / 31 mm
J102724	SS	31.1" / 792 mm	31.4" / 800 mm	0.8" / 21 mm	1.2" / 31 mm
J102725	SS	35.1" / 892 mm	35.4" / 900 mm	0.8" / 21 mm	1.2" / 31 mm

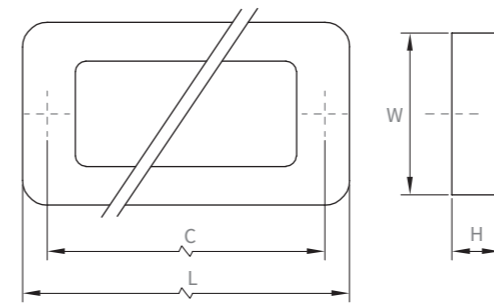
CABINET HANDLES



ZAMAK LOW_0243 with BLACK PLATE

Reference	Finishes	C	L	W	H	Notes	
J102776	PC	2.5" / 64 mm	3.0" / 78 mm	2.0" / 52 mm	0.53" / 13,5 mm	Backplate / Con tapa	25
J102780	PC	7.5" / 192 mm	8.1" / 206 mm	2.0" / 52 mm	0.53" / 13,5 mm	Backplate / Con tapa	25
J102778	AL	2.5" / 64 mm	3.0" / 78 mm	2.0" / 52 mm	0.53" / 13,5 mm	Backplate / Con tapa	25
J102782	AL	7.5" / 192 mm	8.1" / 206 mm	2.0" / 52 mm	0.53" / 13,5 mm	Backplate / Con tapa	25

CABINET HANDLES



ZAMAK LOW_0243 ST

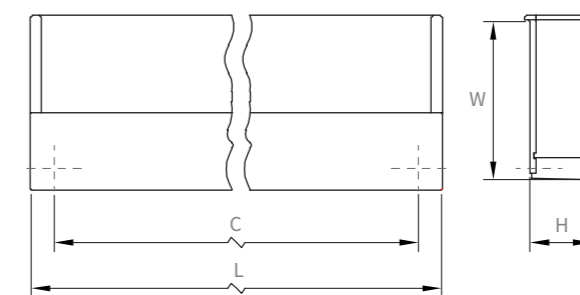
Reference	Finishes	C	L	W	H	Notes	
J102777	PC	2.5" / 64 mm	3.0" / 78 mm	2.0" / 52 mm	0.5" / 13,5 mm	Backplate / Con tapa	25
J102783	PC	7.5" / 192 mm	8.1" / 206 mm	2.0" / 52 mm	0.5" / 13,5 mm	Backplate / Con tapa	25



CABINET HANDLES



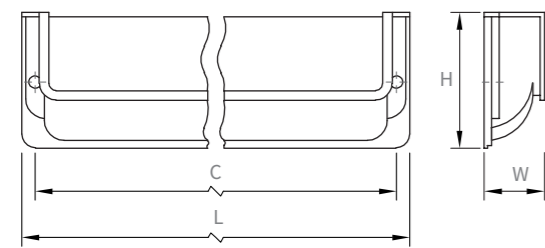
CABINET HANDLES



ZAMAK FLAT _0281

Reference	Finishes	C	L	W	H	
J103118	PC	6.2" / 160 mm	6.8" / 174,8 mm	1.9" / 48,5 mm	0.6" / 16,3 mm	25
J103105	BC	6.2" / 160 mm	6.8" / 174,8 mm	1.9" / 48,5 mm	0.6" / 16,3 mm	25

CABINET HANDLES

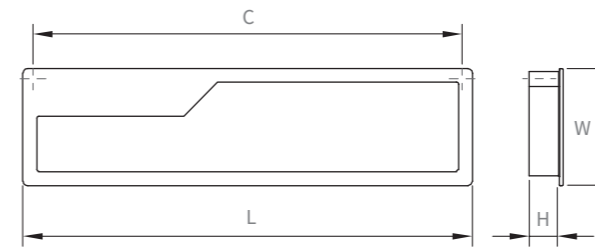


ZAMAK NEST _ 0105 / Combinable with 0094

Reference	Finishes	C	L	W	H	Notes	
J102406	BN	7.9" / 202 mm	8.3" / 212 mm	2.3" / 18.6 mm	1.81" / 46 mm	Door / puerta 0.74"/19 mm	25
J102407	BN	7.9" / 202 mm	8.3" / 212 mm	0.8" / 20.6 mm	1.81" / 46 mm	Door / puerta 0.80"/20.5 mm	25
J102784	PC + M1 White	7.9" / 202 mm	8.3" / 212 mm	2.3" / 18.6 mm	1.81" / 46 mm	Door / puerta 0.74"/19 mm	25
J102785	BN + M1 White	7.9" / 202 mm	8.3" / 212 mm	2.3" / 18.6 mm	1.81" / 46 mm	Door / puerta 0.74"/19 mm	25



CABINET HANDLES

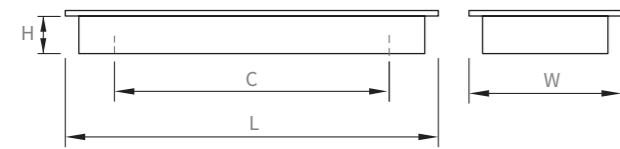


POCKET _ 0209

Reference	Finishes	C	L	W	H	Notes	
J102681	PC	7.5" / 192 mm	7.9" / 201 mm	2.3" / 60 mm	0.5" / 13,5 mm	Backplate / Con tapa	25
J102683	PC + White	7.5" / 192 mm	7.9" / 201 mm	2.3" / 60 mm	0.5" / 13,5 mm	Backplate / Con tapa	25
J102682	BC	7.5" / 192 mm	7.9" / 201 mm	2.3" / 60 mm	0.5" / 13,5 mm	Backplate / Con tapa	25
J102680	BC + White	7.5" / 192 mm	7.9" / 201 mm	2.3" / 60 mm	0.5" / 13,5 mm	Backplate / Con tapa	25



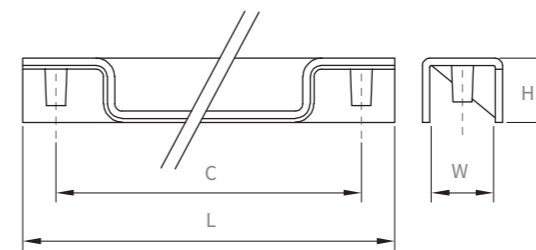
CABINET HANDLES



ZAMAK RAZO _ 0091

Reference	Finishes	C	L	W	H	
J102402	PC	1.2" / 32 mm	2.51" / 64 mm	2.2" / 57 mm	0.54" / 13,9 mm	25
J102403	PC	4.2" / 108 mm	6.0" / 152,5 mm	2.2" / 57 mm	0.54" / 13,9 mm	25
J102640	BN	1.2" / 32 mm	2.7" / 70 mm	2.2" / 57 mm	0.54" / 13,9 mm	25
J102439	BN	4.2" / 108 mm	6.0" / 152,5 mm	2.2" / 57 mm	0.54" / 13,9 mm	25

CABINET HANDLES

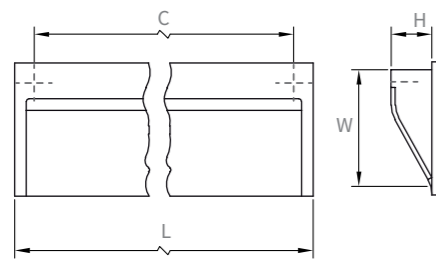


ZAMAK DUA _ 0208

Reference	Finishes	C	L	W	H	
J103181	PC	7.5" / 192 mm	8.2" / 210 mm	0.7" / 19,1 mm	0.6" / 17,5 mm	25
J103151	BC	7.5" / 192 mm	8.2" / 210 mm	0.7" / 19,1 mm	0.6" / 17,5 mm	25



CABINET HANDLES

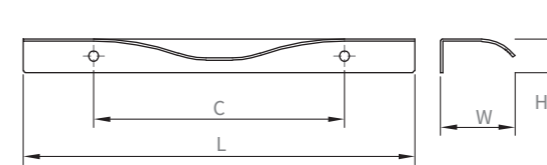


ZAMAK WAVE_0119

Reference	Finishes	C	L	W	H	
J102649	PC	1.2" / 32 mm	1.7" / 45 mm	1.7" / 45 mm	0.5" / 13,5 mm	25
J102651	PC	6.2" / 160 mm	6.8" / 173 mm	1.7" / 45 mm	0.5" / 13,5 mm	25
J102650	BN	1.2" / 32 mm	1.7" / 45 mm	1.7" / 45 mm	0.5" / 13,5 mm	25
J102653	BN	6.2" / 160 mm	6.8" / 173 mm	1.7" / 45 mm	0.5" / 13,5 mm	25



CABINET HANDLES



ALUMINIUM NOMA_0254 / 0255

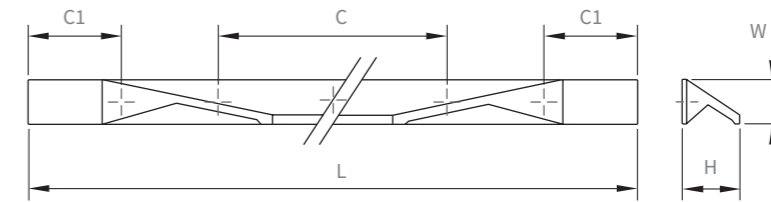
Reference	Finishes	C	L	W	H	Notes	
J102731	SS	5.03" / 128 mm	7.87" / 200 mm	1.49" / 38 mm	0.66" / 17 mm	Door / Puerta 0.74" / 19 mm	25
J102684	SS	10.0" / 256 mm	13.7" / 350 mm	1.49" / 38 mm	0.66" / 17 mm	Door / Puerta 0.74" / 19 mm	25




CABINET HANDLES



CABINET HANDLES



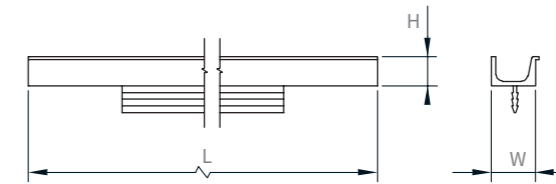
ALUMINIUM TAMM _ 0311

Reference	Finishes	C	C1	L	W	H	holes	
J103081	SS	1.2" / 32 mm	2.1" / 54 mm	5.51" / 140 mm	0.69" / 17,6 mm	0.90" / 23 mm	2	15
J103082	SS	2.5" / 64 mm	2.4" / 63 mm	7.48" / 190 mm	0.69" / 17,6 mm	0.90" / 23 mm	2	15
J103126	SS	5.0" / 128 mm	2.20" / 56 mm	9.44" / 240 mm	0.69" / 17,6 mm	0.90" / 23 mm	2	15
J103127	SS	6.2" / 160 mm	2.28" / 58 mm	11.4" / 290 mm	0.69" / 17,6 mm	0.90" / 23 mm	4	15
J103128	SS	7.5" / 192 mm	2.28" / 58 mm	13.3" / 340 mm	0.69" / 17,6 mm	0.90" / 23 mm	5	15
J103129	SS	10" / 256 mm	2.28" / 58 mm	15.3" / 390 mm	0.69" / 17,6 mm	0.90" / 23 mm	5	15
J103130	SS	10" / 256 mm	2.28" / 58 mm	17.3" / 440 mm	0.69" / 17,6 mm	0.90" / 23 mm	5	10
J103131	SS	12.5" / 320 mm	2.28" / 58 mm	19.2" / 490 mm	0.69" / 17,6 mm	0.90" / 23 mm	5	10
J103132	SS	17.6" / 448 mm	2.28" / 58 mm	23.2" / 590 mm	0.69" / 17,6 mm	0.90" / 23 mm	5	10
J103133	SS	20.1" / 512 mm	2.28" / 58 mm	27.1" / 690 mm	0.69" / 17,6 mm	0.90" / 23 mm	5	10
J103134	SS	23.9" / 608 mm	2.28" / 58 mm	31.1" / 790 mm	0.69" / 17,6 mm	0.90" / 23 mm	6	10
J103135	SS	27.8" / 704 mm	2.28" / 58 mm	35.0" / 890 mm	0.69" / 17,6 mm	0.90" / 23 mm	6	5
J103136	SS	32.7" / 832 mm	2.28" / 58 mm	38.9" / 990 mm	0.69" / 17,6 mm	0.90" / 23 mm	6	5
J103137	SS	40.3" / 1024 mm	2.28" / 58 mm	46.8" / 1190 mm	0.69" / 17,6 mm	0.90" / 23 mm	6	5


CABINET HANDLES



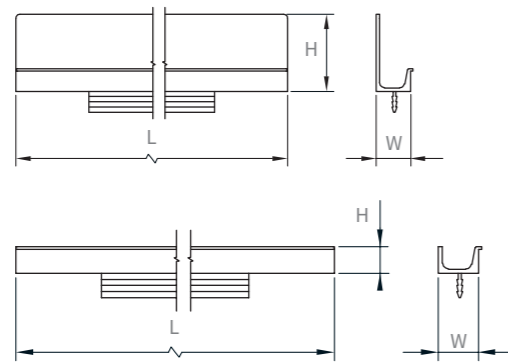
CABINET HANDLES



ALUMINUM JEY2_0163 (Above / Arriba)

Reference	Finishes	L	W	H	
J102911	SS	5.7" / 147 mm	0.64" / 16,5 mm	0.42" / 10.8 mm	15
J102912	SS	7.7" / 197 mm	0.64" / 16,5 mm	0.42" / 10.8 mm	15
J102913	SS	9.7" / 247 mm	0.64" / 16,5 mm	0.42" / 10.8 mm	15
J102914	SS	11.6" / 297 mm	0.64" / 16,5 mm	0.42" / 10.8 mm	15
J102915	SS	13.6" / 347 mm	0.64" / 16,5 mm	0.42" / 10.8 mm	15
J102916	SS	15.6" / 397 mm	0.64" / 16,5 mm	0.42" / 10.8 mm	15
J102917	SS	17.5" / 447 mm	0.64" / 16,5 mm	0.42" / 10.8 mm	10
J102918	SS	19.5" / 497 mm	0.64" / 16,5 mm	0.42" / 10.8 mm	10
J102919	SS	23.5" / 597 mm	0.64" / 16,5 mm	0.42" / 10.8 mm	10
J102920	SS	27.4" / 697 mm	0.64" / 16,5 mm	0.42" / 10.8 mm	10
J102921	SS	31.3" / 797 mm	0.64" / 16,5 mm	0.42" / 10.8 mm	10
J102922	SS	35.3" / 897 mm	0.64" / 16,5 mm	0.42" / 10.8 mm	5
J102923	SS	39.2" / 997 mm	0.64" / 16,5 mm	0.42" / 10.8 mm	5
J102924	SS	47.1" / 1197 mm	0.64" / 16,5 mm	0.42" / 10.8 mm	5

CABINET HANDLES



ALUMINUIM JEY_0127 (Below / Abajo)

Reference	Finishes	L	W	H	☐
J102897	SS	5.7" / 147 mm	0.64" / 16,5 mm	1.4" / 37 mm	15
J102898	SS	7.7" / 197 mm	0.64" / 16,5 mm	1.4" / 37 mm	15
J102899	SS	9.7" / 247 mm	0.64" / 16,5 mm	1.4" / 37 mm	15
J102900	SS	11.6" / 297 mm	0.64" / 16,5 mm	1.4" / 37 mm	15
J102901	SS	13.6" / 347 mm	0.64" / 16,5 mm	1.4" / 37 mm	15
J102902	SS	15.6" / 397 mm	0.64" / 16,5 mm	1.4" / 37 mm	15
J102903	SS	17.5" / 447 mm	0.64" / 16,5 mm	1.4" / 37 mm	10
J102904	SS	19.5" / 497 mm	0.64" / 16,5 mm	1.4" / 37 mm	10
J102905	SS	23.5" / 597 mm	0.64" / 16,5 mm	1.4" / 37 mm	10
J102906	SS	27.4" / 697 mm	0.64" / 16,5 mm	1.4" / 37 mm	10
J102907	SS	31.3" / 797 mm	0.64" / 16,5 mm	1.4" / 37 mm	10
J102908	SS	35.3" / 897 mm	0.64" / 16,5 mm	1.4" / 37 mm	5
J102909	SS	39.2" / 997 mm	0.64" / 16,5 mm	1.4" / 37 mm	5
J102910	SS	47.1" / 1197 mm	0.64" / 16,5 mm	1.4" / 37 mm	5

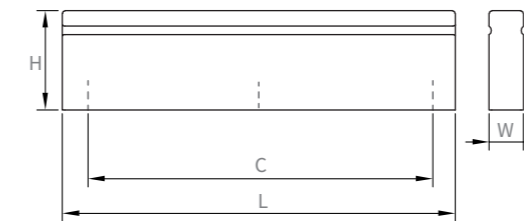


CABINET HANDLES



ALUMINUIM LINE_0058

Reference	Finishes	C	L	W	H	☐
J101726	PC	1.25" / 32 mm	3.14" / 80 mm	0.27" / 7 mm	0.78" / 20 mm	25
J101727	PC	2.51" / 64 mm	4.4" / 112 mm	0.27" / 7 mm	0.78" / 20 mm	25
J101728	PC	5.03" / 128 mm	7.7" / 198 mm	0.27" / 7 mm	0.78" / 20 mm	25
J101729	PC	7.5" / 192 mm	11.7" / 298 mm	0.27" / 7 mm	0.78" / 20 mm	25
J101730	PC	17.6" / 448 mm	19.6" / 498 mm	0.27" / 7 mm	0.78" / 20 mm	25

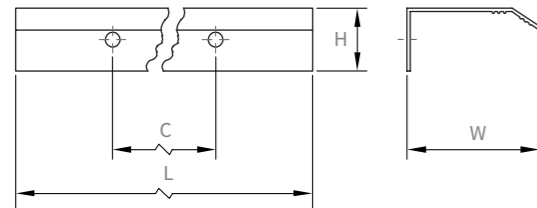


CABINET HANDLES



ALUMINIUM CURVE _ 0117

Reference	Finishes	C	L	W	H	📦
J102647	A. Matt	1.25" / 32 mm	1.7" / 45 mm	1.4" / 36 mm	0.66" / 17 mm	25
J102648	A. Matt	5.03" / 128 mm	7.8" / 200 mm	1.4" / 36 mm	0.66" / 17 mm	25
J102641	SS	1.25" / 32 mm	1.7" / 45 mm	1.4" / 36 mm	0.66" / 17 mm	25
J102642	SS	2.5" / 64 mm	3.9" / 100 mm	1.4" / 36 mm	0.66" / 17 mm	25
J102643	SS	5.03" / 128 mm	7.8" / 200 mm	1.4" / 36 mm	0.66" / 17 mm	25
J102644	SS	7.5" / 192 mm	11.8" / 300 mm	1.4" / 36 mm	0.66" / 17 mm	25
J102645	SS	12.5" / 320 mm	15.7" / 400 mm	1.4" / 36 mm	0.66" / 17 mm	25
J102646	SS	16.3" / 416 mm	19.6" / 500 mm	1.4" / 36 mm	0.66" / 17 mm	25



CABINET HANDLES



BELEN

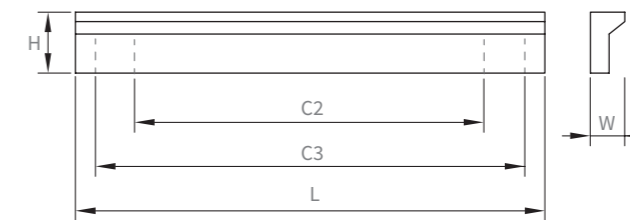
Reference	Finishes	C1	C2	C3	L	W	H	📦
J103246	BN		2.5" / 64 mm		3.9" / 100 mm	0.43" / 11 mm	0.76" / 19.5 mm	25
J103247	BN	3.77" / 96 mm	5.03" / 128 mm	6.2" / 160 mm	7.8" / 200 mm	0.43" / 11 mm	0.76" / 19.5 mm	25
J103248	BN		7.5" / 192 mm		11.8" / 300 mm	0.43" / 11 mm	0.76" / 19.5 mm	25
J103249	BN		10" / 256 mm	12.5" / 320 mm	15.7" / 400 mm	0.43" / 11 mm	0.76" / 19.5 mm	25
J103250	BN		16.3" / 416 mm		19.6" / 500 mm	0.43" / 11 mm	0.76" / 19.5 mm	25
J103251	BN		20.1" / 512 mm		23.6" / 600 mm	0.43" / 11 mm	0.76" / 19.5 mm	25
J103252	BN		25" / 640 mm		35.4" / 900 mm	0.43" / 11 mm	0.76" / 19.5 mm	25



CABINET HANDLES



CABINET HANDLES



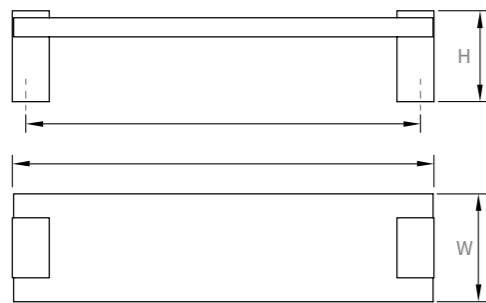
ANGLE

Reference	Finishes	C1	C2	L	W	H	⊞
J101988	SS	2.5" / 64 mm	3.9" / 100 mm	0.43" / 11 mm	0.76" / 19.5 mm	25	
J101989	SS	5.03" / 128 mm	7.8" / 200 mm	0.43" / 11 mm	0.76" / 19.5 mm	25	
J101781	SS	7.5" / 192 mm	11.8" / 300 mm	0.43" / 11 mm	0.76" / 19.5 mm	25	
J101783	SS	10" / 256 mm	15.7" / 400 mm	0.43" / 11 mm	0.76" / 19.5 mm	25	
J101785	SS	16.3" / 416 mm	19.6" / 500 mm	0.43" / 11 mm	0.76" / 19.5 mm	25	
J101786	SS	20.1" / 512 mm	23.6" / 600 mm	0.43" / 11 mm	0.76" / 19.5 mm	25	
J101787	SS	25" / 640 mm	35.4" / 900 mm	0.43" / 11 mm	0.76" / 19.5 mm	25	
J101779	SS	5.03" / 128 mm	5.9" / 150 mm	0.43" / 11 mm	0.76" / 19.5 mm	25	
J101786	SS	6.2" / 160 mm	7.4" / 190 mm	0.43" / 11 mm	0.76" / 19.5 mm	25	
J101782	SS	7.5" / 192 mm	9.8" / 250 mm	0.43" / 11 mm	0.76" / 19.5 mm	25	
J101784	SS	10" / 256 mm	11.8" / 300 mm	0.43" / 11 mm	0.76" / 19.5 mm	25	

CABINET HANDLES



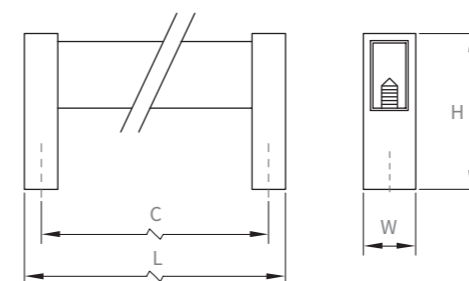
ZAMAK + ACRYLIC BICO _ 0258



Reference	Finishes	C	L	W	H	
J103083	BN	2.5" / 64 mm	2.8" / 72 mm	1.3" / 35 mm	1.16" / 29.5 mm	25
J103084	BN	5.0" / 128 mm	5.3" / 136 mm	1.3" / 35 mm	1.16" / 29.5 mm	25
J103085	BN	7.5" / 192 mm	7.8" / 200 mm	1.3" / 35 mm	1.16" / 29.5 mm	25
J103086	BN	2.5" / 64 mm	2.8" / 72 mm	1.3" / 35 mm	1.16" / 29.5 mm	25
J103087	BN	5.0" / 128 mm	5.3" / 136 mm	1.3" / 35 mm	1.16" / 29.5 mm	25
J103088	BN	7.5" / 192 mm	7.8" / 200 mm	1.3" / 35 mm	1.16" / 29.5 mm	25



CABINET HANDLES



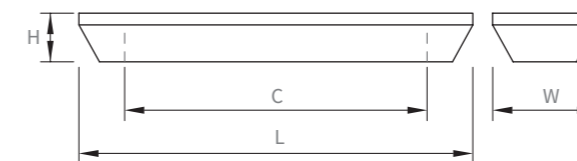
ZAMAK + ACRYLIC TRESS _ 0260

Reference	Finishes	C	L	W	H	
J102772	PC+T1 Transparent	6.2" / 160 mm	6.6" / 169 mm	0.5" / 14 mm	1.6" / 42 mm	25
J102774	PC+T3 Transparent Green	6.2" / 160 mm	6.6" / 169 mm	0.5" / 14 mm	1.6" / 42 mm	25
J102773	PC+T2 Transparent Grey	6.2" / 160 mm	6.6" / 169 mm	0.5" / 14 mm	1.6" / 42 mm	25

CABINET HANDLES



CABINET HANDLES



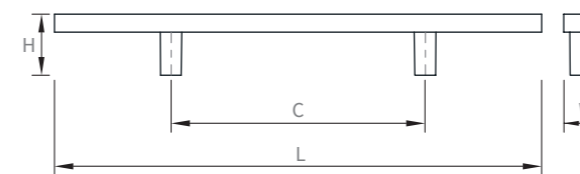
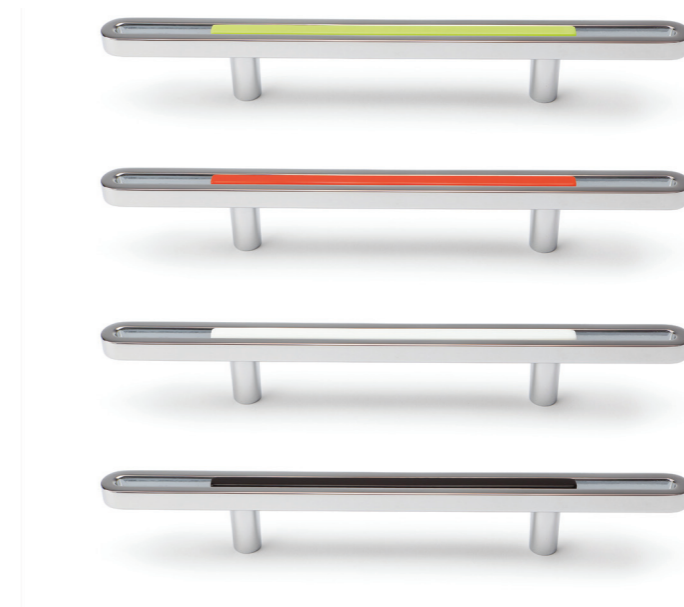
ACRYLIC CORE_0074

Reference	Finishes	C	L	W	H	☐
Ji01971	White / Blanco	1.25" / 32 mm	2.40" / 61 mm	1.29" / 33 mm	0.61" / 15.5 mm	25
Ji01919	White / Blanco	1.25" / 32 mm	2.40" / 61 mm	1.29" / 33 mm	0.61" / 15.5 mm	25
Ji01934	White / Blanco	3.7" / 96 mm	4.9" / 125 mm	1.29" / 33 mm	0.61" / 15.5 mm	25
Ji01954	White / Blanco	6.2" / 160 mm	7.4" / 190 mm	1.29" / 33 mm	0.61" / 15.5 mm	25
Ji01972	Black / Negro	1.25" / 32 mm	2.40" / 61 mm	1.29" / 33 mm	0.61" / 15.5 mm	25
Ji01922	Black / Negro	1.25" / 32 mm	2.40" / 61 mm	1.29" / 33 mm	0.61" / 15.5 mm	25
Ji01974	Black / Negro	3.7" / 96 mm	4.9" / 125 mm	1.29" / 33 mm	0.61" / 15.5 mm	25
Ji01955	Black / Negro	6.2" / 160 mm	7.4" / 190 mm	1.29" / 33 mm	0.61" / 15.5 mm	25
Ji01973	Lime / Lima	1.25" / 32 mm	2.40" / 61 mm	1.29" / 33 mm	0.61" / 15.5 mm	25
Ji01925	Lime / Lima	1.25" / 32 mm	2.40" / 61 mm	1.29" / 33 mm	0.61" / 15.5 mm	25
Ji01948	Lime / Lima	3.7" / 96 mm	4.9" / 125 mm	1.29" / 33 mm	0.61" / 15.5 mm	25
Ji01956	Lime / Lima	6.2" / 160 mm	7.4" / 190 mm	1.29" / 33 mm	0.61" / 15.5 mm	25
Ji01949	Coffe / Café	3.7" / 96 mm	4.9" / 125 mm	1.29" / 33 mm	0.61" / 15.5 mm	25
Ji01957	Coffe / Café	6.2" / 160 mm	7.4" / 190 mm	1.29" / 33 mm	0.61" / 15.5 mm	25
Ji01947	Orange / Naranja	1.25" / 32 mm	2.40" / 61 mm	1.29" / 33 mm	0.61" / 15.5 mm	25
Ji01927	Orange / Naranja	1.25" / 32 mm	2.40" / 61 mm	1.29" / 33 mm	0.61" / 15.5 mm	25
Ji01950	Orange / Naranja	3.7" / 96 mm	4.9" / 125 mm	1.29" / 33 mm	0.61" / 15.5 mm	25
Ji01958	Orange / Naranja	6.2" / 160 mm	7.4" / 190 mm	1.29" / 33 mm	0.61" / 15.5 mm	25
Ji01975	Blue / Azul	1.25" / 32 mm	2.40" / 61 mm	1.29" / 33 mm	0.61" / 15.5 mm	25
Ji01920	Blue / Azul	1.25" / 32 mm	2.40" / 61 mm	1.29" / 33 mm	0.61" / 15.5 mm	25
Ji01952	Blue / Azul	3.7" / 96 mm	4.9" / 125 mm	1.29" / 33 mm	0.61" / 15.5 mm	25
Ji01959	Blue / Azul	6.2" / 160 mm	7.4" / 190 mm	1.29" / 33 mm	0.61" / 15.5 mm	25
Ji01976	Violet / Violeta	2.40" / 61 mm	1.29" / 33 mm	1.29" / 33 mm	0.61" / 15.5 mm	25
Ji01928	Violet / Violeta	1.25" / 32 mm	4.9" / 125 mm	1.29" / 33 mm	0.61" / 15.5 mm	25
Ji01953	Violet / Violeta	3.7" / 96 mm	7.4" / 190 mm	1.29" / 33 mm	0.61" / 15.5 mm	25
Ji01960	Violet / Violeta	6.2" / 160 mm	8.7" / 222 mm	1.29" / 33 mm	0.61" / 15.5 mm	25

CABINET HANDLES



CABINET HANDLES



ZAMAK + ACRYLIC CLIP _ 0010

Reference	Finishes	C	L	W	H	☐
J10	PC+White/ Blanco	3.77" / 96 mm	7.28" / 185 mm	0.51" / 13 mm	0.98" / 25 mm	25
J10	PC+Black/ Negro	3.77" / 96 mm	7.28" / 185 mm	0.51" / 13 mm	0.98" / 25 mm	25
J10	PC+Oranje / Naranja	3.77" / 96 mm	7.28" / 185 mm	0.51" / 13 mm	0.98" / 25 mm	25

CABINET HANDLES

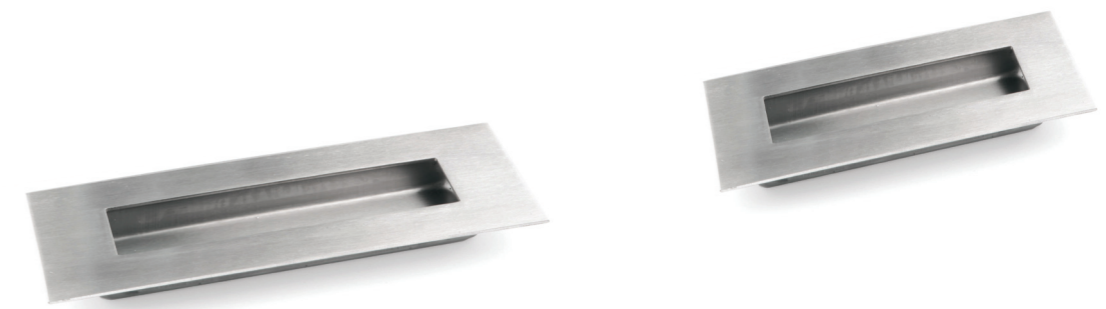


CABINET HANDLES



9005

Reference	Finishes	W	H	📦
J102711	PC	4.72" / 120 mm	1.57" / 40 mm	25
J100827	SS	4.72" / 120 mm	1.57" / 40 mm	25



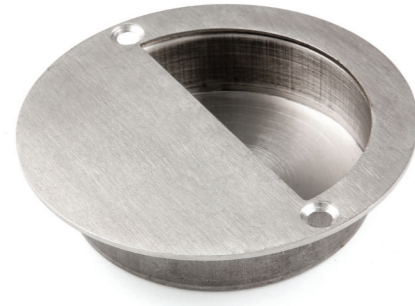
9008

Reference	Finishes	W	📦
J102450	SS	4.72" / 120 mm	25
J102452	PC	4.72" / 120 mm	25

9008

Reference	Finishes	W	📦
J102453	PC	5.90" / 150 mm	25
J102451	SS	5.90" / 150 mm	25

CABINET HANDLES



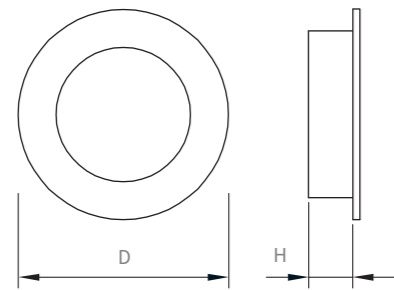
9007

Reference	Finishes	D
J102448	SS	2.5" / 65 mm
J102449	PC	3.5" / 90 mm

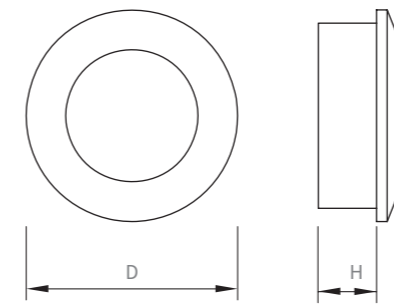


CABINET HANDLES


Tirador de Embutir

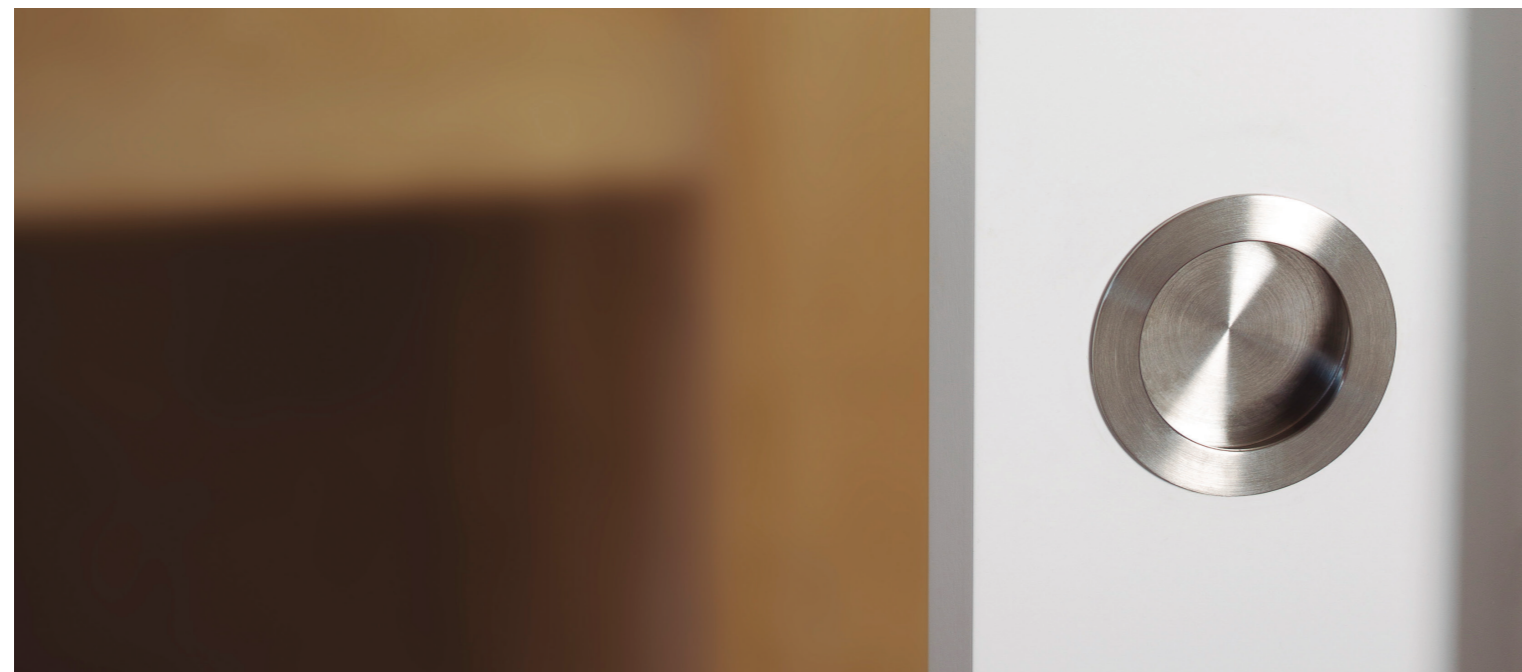


Reference	Finishes	D	Notes
J100561	SS	1.57" / 40 mm	
J100712	SS	1.57" / 40 mm	
J102713	PC	1.9" / 50 mm	Round Flush
J102714	PC	2.5" / 65 mm	
J100566	SS	2.5" / 65 mm	Jaladera de embutir circular grande



MATE ALUMINIUM TAP

Reference	Finishes	D	H	
J101771	PC	1.5" / 40 mm	0.4" / 12 mm	25
J101772	PC	2.3" / 60 mm	0.4" / 12 mm	25



CABINET HANDLES



I-110

Reference	Finishes	W
J102340	SS	5" / 128 mm
J102341	SS	6 1/4" / 160 mm
J102342	SS	7 1/2" / 192 mm
J102343	SS	12 5/8" / 320 mm
J102344	BC	5" / 128 mm
J102345	BC	6 1/4" / 160 mm
J102346	BC	7 1/2" / 192 mm
J102347	BC	12 5/8" / 320 mm



BALE

Reference	Finishes	W
J102076	BN	5" / 128 mm
J102077	BN	6 1/4" / 160 mm
J102078	BN	7 1/2" / 192 mm
J102505	BN	12 5/8" / 320 mm
J102076-CP	PC	5" / 128 mm
J102077-CP	PC	6 1/4" / 160 mm
J102078-CP	PC	7 1/2" / 192 mm
J102505-CP	PC	12 5/8" / 320 mm

CABINET HANDLES



I-400

Reference	Finishes	W
J100885	SS	0,47" x 3 3/4" / 12 x 096mm
J100886	SS	0,47" x 5" / 12 x 128mm
J100887	SS	0,47" x 6 1/4" / 12 x 160mm
J100888	SS	0,47" x 7 1/2" / 12 x 192mm
J100274	SS	0,47" x 12 5/8" / 12 x 320mm
J102559	SS	18.8" / 480 mm



I-440

Reference	Finishes	W
J100895	SS	6.29" / 160 mm
J100969	SS	7.55" / 192 mm
J101409	SS	8.81" / 224 mm
J100896	SS	12.5" / 320 mm
J101410	SS	27.5" / 700 mm

CABINET HANDLES



BILBAO

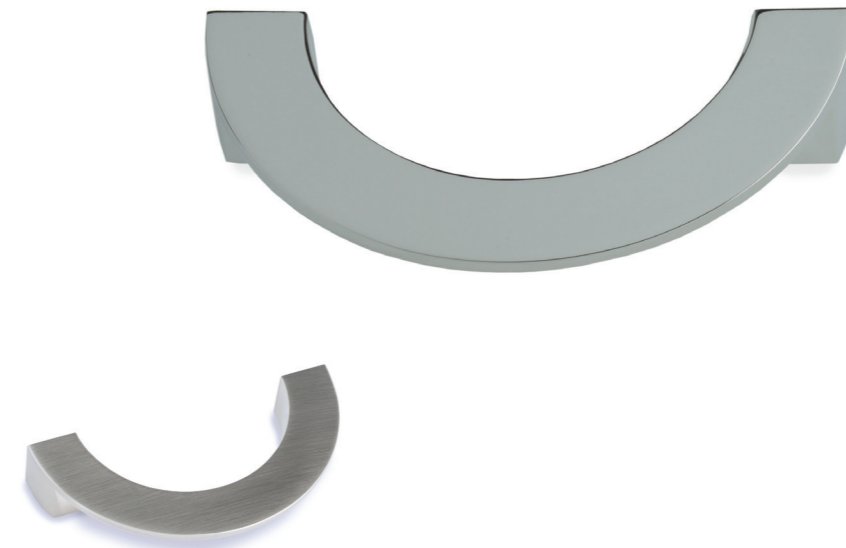
Reference	Finishes	W
J102040	BN	3 3/4" / 096 mm
J102041	BN	5" / 128mm
J102042	BN	7 1/2" / 192mm
J102037	PC	3 3/4" / 096 mm
J102038	PC	5" / 128mm
J102039	PC	7 1/2" / 192mm



ANDALUCIA

Reference	Finishes	W
J102049	BN / Knob	5" / 128 mm
J102043	BN	5" / 128 mm
J102044	BN	6 1/4" / 160 mm
J102045	BN	7 1/2" / 192 mm
J102046	BN	8 7/8" / 224 mm
J102047	BN	10 1/8" / 256 mm
J102048	BN	12 5/8" / 320 mm

CABINET HANDLES



MEDIA LUNA

Reference	Finishes	W
J102064	PC	3 3/4" / 096 mm
J102065	BN	3 3/4" / 096 mm



BARCELONA

Reference	Finishes	W
J102079	PC	5" / 128 mm
J102080	PC	7 1/2" / 192 mm
J102081	PC	10 1/8" / 256 mm
J102051	PC	12 5/8" / 320 mm
J102052	PC	18 7/8" / 480 mm
J102593	BN	5" / 128 mm
J102594	BN	7 1/2" / 192 mm
J102595	BN	10 1/8" / 256 mm
J102596	BN	12 5/8" / 320 mm
J102597	BN	18 7/8" / 480 mm

CABINET HANDLES



I-200

Reference	Finishes	W
J102144	SS	3 3/4" / 096 mm
J102145	SS	0.47 x 5" / 12 x 128 mm
J102146	SS	0.47 x 6 1/4" / 12 x 160 mm
J102147	SS	0.47 x 7 1/2" / 12 x 192 mm
J102148	SS	0.47 x 12 5/8" / 12 x 288 mm
J102149	SS	0.47 x 11 3/4" / 12 x 300 mm
J102150	PC	0.47 x 3 3/4" / 12 x 096 mm
J102151	PC	0.47 x 5" / 12 x 128 mm
J102152	PC	0.47 x 6 1/4" / 12 x 160 mm
J102153	PC	0.47 x 7 1/2" / 12 x 192 mm
J102154	PC	0.47 x 12 5/8" / 12 x 288 mm
J102155	PC	0.47 x 11 3/4" / 12 x 300 mm



IN-350

Reference	Finishes	W
J101630	PC	1 1/4" / 32 mm
J102122	PC	3 3/4" / 096 mm
J102123	PC	3 3/4" / 096 mm
J102124	PC	6 1/4" / 160 mm
J102125	PC	7 1/2" / 192 mm
J102126	PC	12 5/8" / 320 mm
J101517	BN	1 1/4" / 32 mm
J100902	BN	3 3/4" / 096 mm
J101515	BN	128 mm
J101086	BN	6 1/4" / 160 mm
J101294	BN	7 1/2" / 192 mm
J102129	BN	12 5/8" / 320 mm

CABINET HANDLES



BELEN

Reference	Finishes	W
J103220	BN	2.51" / 64 mm
J103222	BN	5.0" / 128 mm
J103224	BN	7.55" / 192 mm
J103226	BN	10.0" / 256 mm
J103228	BN	12.5" / 320 mm
J103230	BN	20.1" / 512 mm
J103232	BN	25.1" / 640 mm
J103221-CP	PC	2.51" / 64 mm
J103223-CP	PC	5.0" / 128 mm
J103225-CP	PC	7.55" / 192 mm
J103227-CP	PC	10.0" / 256 mm
J103229-CP	PC	12.5" / 320 mm
J103231-CP	PC	20.1" / 512 mm
J103233-CP	PC	25.1" / 640 mm



CANA

Reference	Finishes	W
J103234	BN	5.0" / 128 mm
J103235	PC	5.0" / 128 mm
J103236	BN	7.55" / 192 mm
J103237	PC	7.55" / 192 mm
J103238	BN	10.0" / 256 mm
J103239	PC	10.0" / 256 mm
J103240	BN	12.5" / 320 mm
J103241	PC	12.5" / 320 mm
J103242	BN	18.8" / 480 mm
J103243	PC	18.8" / 480 mm
J103244	BN	26.4" / 672 mm
J103245	PC	26.4" / 672 mm